



s.97

3/4" - 2"
ISO 228
with built-in filter

This ball valve with built-in vertical filter allows a large flow rate with a low pressure drop and supports a maximum pressure of 30 bar (PN).

This innovative product avoids the installation of two ball valves, before and after the filter. Quick and easy assembly, maintenance and cleaning.



QUALITY

- Substitutes 3 different components (2 ball valves and one filter)
- Reduces leakage risks due to lower sealing points
- Cost saving due to reduced number of components
- Time saving at installation and maintenance
- Built-in vertical filter with cartridge structure in AISI304 (filtration degree: 500 microns / 35 mesh).
- No metal-to-metal moving parts
- Handle clearly shows ball position
- Chrome plated brass ball for longer life
- Handle stop on body to avoid stress at stem
- Water glycol ready

BODY

- Hot forged sand blasted, external nickel plated brass body and cap sealed with Loctite® or equivalent thread sealant
- Finest brass according to EN 12165 and EN 12164 specifications
- Bottom plug for an easy filter maintenance

STEM

- Blowout-proof unplated brass stem
- Double EPDM O-rings at the stem for maximum safety

SEALING

- Pure PTFE seats

THREADS

- ISO 228 parallel female by female threads

FLOW

- Nominal port

OPTIONS

- T-handle

HANDLE

- Geomet® carbon steel handle with thick PVC dip coating. Handle coating offers both thermal and electrical protection
- Handle removable with valve in service
- **WARNING:** do not exceed reasonable temperature and/or electrical load

WORKING PRESSURE & TEMPERATURE

- Shell rating: 30 bar (450 PSI) non-shock cold working pressure for sizes 3/4" and 1", 20 bar (290 PSI) for sizes 1 1/4" to 2"
- -20°C to +150°C (-4°F to +302°F)
- **WARNING:** freezing of the fluid in the installation may severely damage the valve
- **WARNING:** with pressure differentials higher than 2 bar, cleaning operation is mandatory (refer to Installation, Maintenance and Operating Instructions provided with the valve)

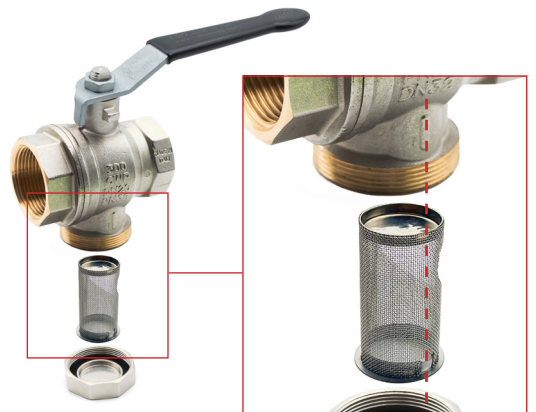
PED DIRECTIVE

- According to 2014/68/UE, 1 1/4" and superior sizes cannot be used with dangerous fluids

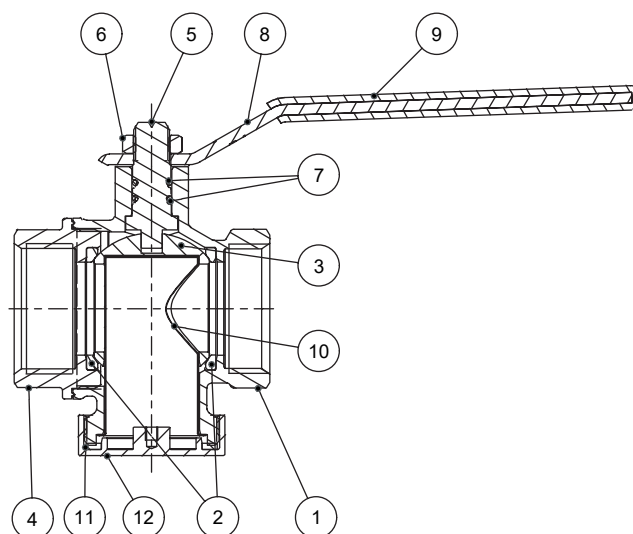
APPROVED BY OR IN COMPLIANCE WITH

- RoHS Compliant (EU)
- EAC – Declaration of conformity (Russia, Kazakhstan, Belarus)

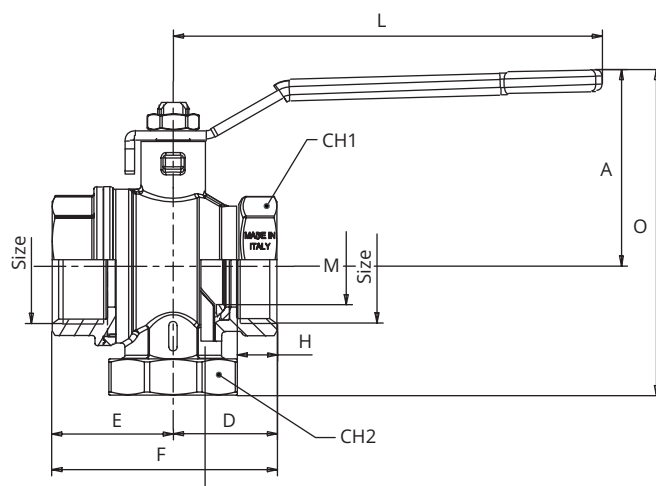
NOTE: approvals apply to specific configurations/sizes only.



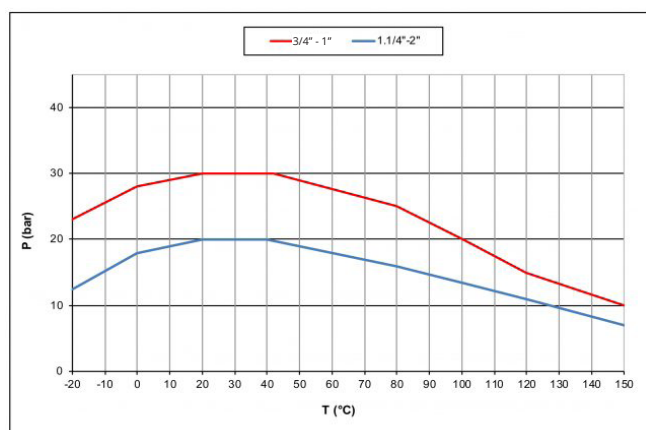
	Part description	Q.ty	Material
1	Sand blasted nickel plated body (External nickel plated, unplated inside)	1	CW617N
2	Seat	2	PTFE
3	Chrome plated ball	1	CW617N
4	Sand blasted nickel plated end cap (External nickel plated, unplated inside)	1	CW617N
5	Nickel plated stem O-Ring design	1	CW617N
6	Geomet® plated steel nut	1	C4C
7	O-Ring peroxide cured Shore A 70±5	2	EPDM
8	Geomet® steel handle	1	Carbon steel
9	Black dipped coating (RAL 9005)		PVC
10	Sheet metal filter - 500 µm mesh	1	AISI 304
11	Gasket	1	EPDM
12	Nickel plated filter cap	1	CW617N



Code	S97E00	S97F00	S97G00	S97H00	S97I00
Size (inch)	3/4"	1"	1 1/4"	1 1/2"	2"
A (mm)	50	73	73	79	86
D (mm)	27	38	38.5	45	53
E (mm)	29.5	33.5	44.8	51	60.95
F (mm)	56.5	71.5	83.3	96	113.95
H (mm)	12	14	15	17	19
L (mm)	120	120	158	158	158
M (mm)	16	20	28.5	37	48
O (mm)	85	94	120	133.5	151
CH1 (mm)	31	38	48	54	65
CH2 (mm)	30	38	48	55	68
PN (bar)	30	30	20	20	20
Kv (m3/h)	TBD	TBD	18	18	32



PRESSURE-TEMPERATURE CHART



PRESSURE DROP CHART

