

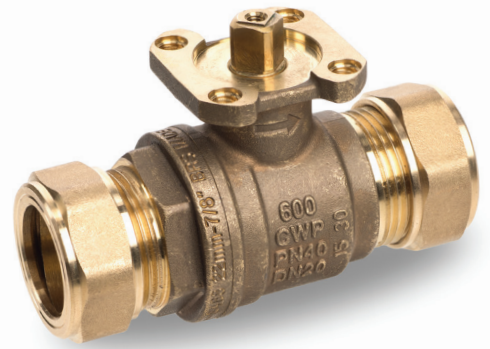


# s.468LF DZR

22 mm compression ends

ISO 5211

Lead-Free, dezincification-resistant



## QUALITY

- 100% seal test guaranteed
- Arrow on the valve body clearly shows the flow direction
- No metal-to-metal moving parts
- No maintenance ever required
- Stem clearly shows ball position
- Silicone-free lubricant on all seals
- Chrome plated DZR and lead free brass ball for longer life and with antifreeze function

## BODY

- Hot forged sand blasted DZR and lead free unplated body and cap sealed with Loctite® or equivalent thread sealant
- Dezincification-resistant and lead free brass in compliance with HCACL Hygienic copper alloy composition (UBA list)

## STEM

- Maintenance-free, double EPDM O-rings at the stem for maximum safety
- Blowout-proof unplated DZR and lead free brass stem

## SEALING

- EPDM seats for lower torque

## THREADS

- Compression ends to EN 1254-2

## FLOW

- Full port to DIN 3357 for maximum flow

## HANDLE

- Integrated sturdy ISO 5211 flange allows direct mounting of electric and pneumatic actuators, with no bracket or coupling required. See **RuB** line of electric and pneumatic actuators.

## WORKING PRESSURE & TEMPERATURE

- Shell rating: 40 bar (600 PSI) non-shock cold working pressure
- Seat rating/compression ends: 16 bar max (230 PSI max) non-shock cold working pressure (see chart for pressure/temperature limits)
- -20°C to +120°C (-4°F to +250°F)
- **WARNING:** freezing of the fluid in the installation may severely damage the valve

## UPON REQUEST

- Custom design

## PED DIRECTIVE

- The product described in this document meets the requirements of PED Directive 2014/68/UE and according to art.4 par.3, it does not require CE marking

## APPROVED BY OR IN COMPLIANCE WITH

- Certified by CSA International for Drinking Water to NSF/ANSI 372 (United States)
- Water Regulations Advisory Scheme (United Kingdom)

**NOTE:** approvals apply to specific configurations/sizes only.

## OPTIONS

- S.468 DZR and lead free 7/8" compression ends
- Rack and pinion pneumatic actuator (spring return or double acting)
- Compact power electric actuator
- Manual lockable handle

## s.468LF DZR XCES468 - 5466

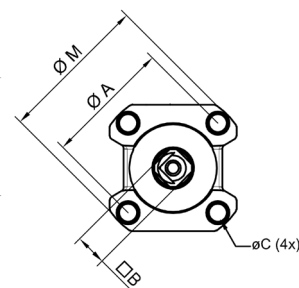
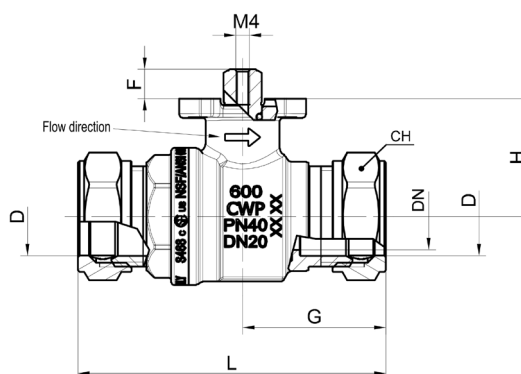
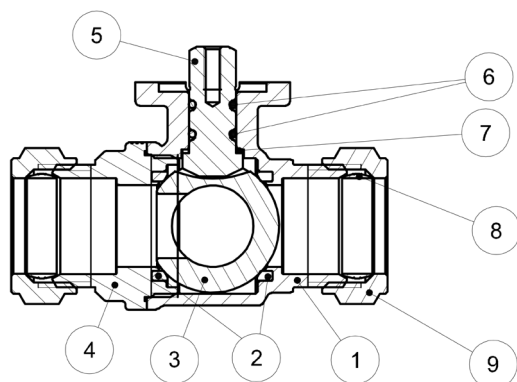
Each user should perform his own tests to find out the suitability for his particular application. BONOMI INDUSTRIES makes no warranty, express or implied, as to the shape, fit or function of a product for any application. Contact us or consult with your supplier for additional information on the suitability of the BONOMI INDUSTRIES products with your specific field of use.



	Part description	Q.ty	Material
1	Unplated body	1	CW511L
2	Seat	2	EPDM
3	Chrome plated ball	1	CW511L
4	Unplated end-cap	1	CW511L
5	Unplated stem	1	CW511L
6	O-Ring	2	EPDM
7	Washer	1	PTFE carbon filled 25%
8	Olive	2	CW508L
9	Unplated nut	2	CW617N

DN shows the nominal flow diameter. Actual flow diameter complies with full port DIN 3357 part 4.

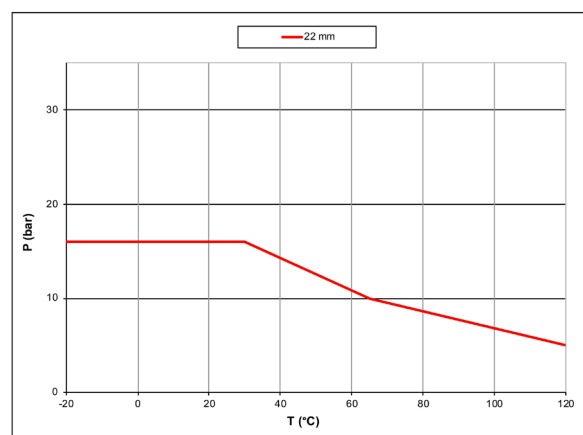
Code	S468E22
D (inch)	22
DN(mm)	19
L (mm)	87,5
G (mm)	40,7
H (mm)	33,5
ØA (mm)	36
ØC (mm)	Ø5.2 (M6)
Square B (mm)	9
ØM (mm)	43,4
F (mm)	8,3
CH (mm)	32
Kv (m3/h)	36



### TORQUE FOR ACTUATOR SIZING N.M

Delta P -->	0÷6 bar	6÷16 bar
Valve size	<i>to open/to close</i>	<i>to open/to close</i>
22 mm	2,5	3

### PRESSURE-TEMPERATURE CHART



### PRESSURE DROP CHART

