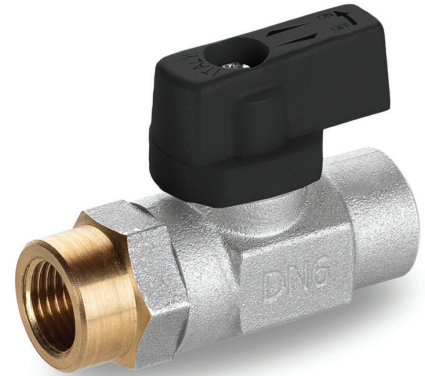




s.39 NPT forged, micro

**Female/Female
1/8" - 1/4"
high pressure ball valve**



QUALITY

- Dual sealing system allows valve to be operated in either direction making installation easier
- No metal-to-metal moving parts
- No maintenance ever required
- Silicone-free lubricant on all seals
- Chrome plated brass ball for longer life
- Each valve is seal tested for maximum safety
- Handle stops on body to avoid stresses at stem
- Handle / stem clearly shows ball position

BODY

- Hot forged sand blasted brass body
- Finest brass according to EN 12165 specification

STEM

- Blowout-proof brass stem
- Maintenance-free, double FPM O-ring at the stem for maximum safety

SEALING

- Pure PTFE self-lubricating seats with flexible-lip design

THREADS

- NPT taper ANSI B.1.20.1 threads | ISO 228 parallel female by female threads

HANDLE

- Reinforced nylon black wedge handle
- **WARNING:** do not exceed reasonable temperature and/or electrical load
- Handle removable with valve in service

WORKING PRESSURE & TEMPERATURE

- 900 PSI (60 bar) non-shock cold working pressure
- -4°F to +200°F (-20°C to +90°C)
- +250°F (+120°C) metal wedge handle (mini configuration only)
- **WARNING:** freezing of the fluid in the installation may severely damage the valve

UPON REQUEST

- ISO 7/1 BSPT taper threads
- Other brass alloys or aluminum
- Additional connection options

PED DIRECTIVE

- The product meets the requirements of PED Directive 2014/68/UE and according to art.4 par.3, it does not require CE marking

APPROVED BY OR IN COMPLIANCE WITH

- RoHS Compliant (EU)
- EAC – Declaration of conformity (Russia, Kazakhstan, Belarus)

NOTE: approvals apply to specific configurations/sizes only.

OPTIONS

- Male by female threads
- Nylon wedge handle yellow, red or blue



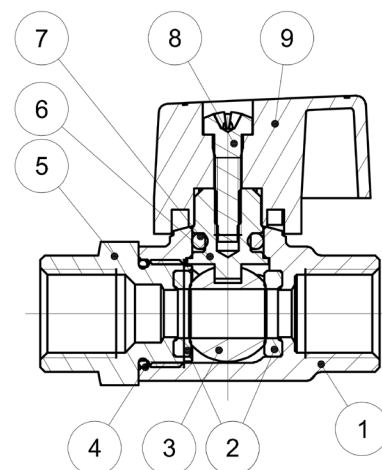
s.39 NPT XCES39N - 5813

Each user should perform his own tests to find out the suitability for his particular application. BONOMI INDUSTRIES makes no warranty, express or implied, as to the shape, fit or function of a product for any application. Contact us or consult with your supplier for additional information on the suitability of the BONOMI INDUSTRIES products with your specific field of use.

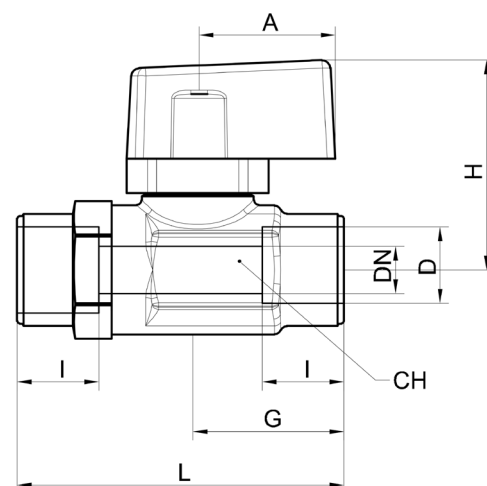


PNEUMATIC

	Part description	Q.ty	Material
1	Nickel plated body (external nickel plated, unplated inside)	1	CW617N
2	Ball seat	2	PTFE
3	Chrome plated ball	1	CW617N
4	O-Ring	1	HNBR
5	Nickel plated end cap (external nickel plated, unplated inside)	1	CW617N
6	Unplated stem	1	CW617N
7	O-Ring	1	FPM
8	Zinc plated screw	1	C10C (EN10263-2)
9	Black handle	1	Nylon glass filled 30%

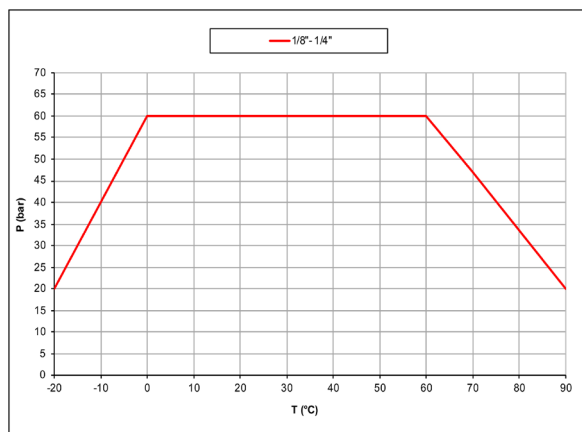


Code	S39AX0M	S39BX0M
D (inch)	1/8"	1/4"
DN (inch)	0.209	0.209
I (inch)	0.374	0.472
L (inch)	1.496	1.732
G (inch)	0.669	0.787
A (inch)	0.630	0.630
H (inch)	0.965	0.965
CH (inch)	0.591	0.591
Cv (GPM)	1.4	1.4



DN shows the nominal flow diameter.

PRESSURE-TEMPERATURE CHART



PRESSURE DROP CHART

