



# s.34 NPT

**Female/Female  
1/8" - 1/2"  
mini ball valve, suitable for panel mounting**



## QUALITY

- 24h 100% seal test guaranteed
- Dual sealing system allows valve to be operated in either direction making installation easier
- No metal-to-metal moving parts
- No maintenance ever required
- Handle clearly shows ball position
- Silicone-free lubricant on all seals
- Chrome plated brass ball for longer life

## BODY

- One piece drawn sand blasted brass body incorporating stem neck which provides excellent guidance of the stem
- Finest brass according to EN 12164 specification

## STEM

- Maintenance-free, double FPM O-rings at the stem for maximum safety

## SEALING

- Pure PTFE self-lubricating seats with flexible-lip design

## THREADS

- NPT taper ANSI B.1.20.1 female by female threads

## HANDLE

- Lever and T-handle clearly show ball position
- Nylon black lever or T-handle removable with valve in service

## WORKING PRESSURE & TEMPERATURE

- 200 PSI (15 bar) non-shock cold working pressure
- -4°F to +200°F (-20°C to +90°C)
- **WARNING:** freezing of the fluid in the installation may severely damage the valve

## PED DIRECTIVE

- The product meets the requirements of PED Directive 2014/68/UE and according to art.4 par.3, it does not require CE marking

## APPROVED BY OR IN COMPLIANCE WITH

- EAC – Declaration of conformity (Russia, Kazakhstan, Belarus)
- RoHS Compliant (EU)

**NOTE:** approvals apply to specific configurations/sizes only.

## OPTIONS

- Male by female threads
- Screw driver or wrench operated
- Yellow lever or T-handle

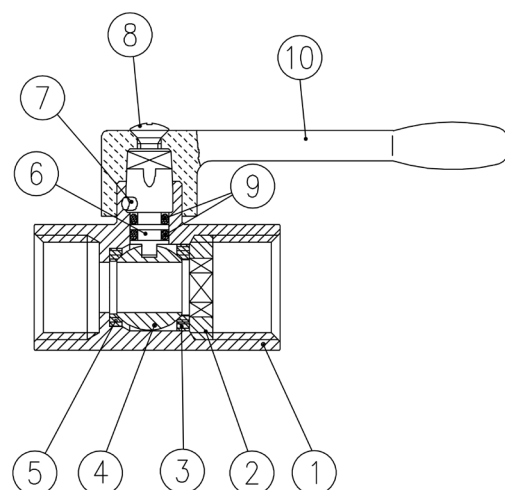


## s.34 NPT XGES34N - 5813

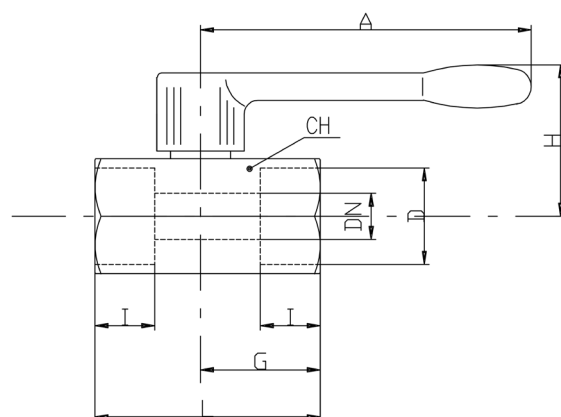
Each user should perform his own tests to find out the suitability for his particular application. BONOMI INDUSTRIES makes no warranty, express or implied, as to the shape, fit or function of a product for any application. Contact us or consult with your supplier for additional information on the suitability of the BONOMI INDUSTRIES products with your specific field of use.



Part description		Q.ty	Material
1	Chrome plated body	1	CW617N
2	Retainer nut	1	CW617N
3	Retainer seat	1	PTFE
4	Chrome plated ball	1	CW617N
5	Body seat	1	PTFE
6	Unplated stem	1	CW617N
7	Pin	1	1.4301 / AISI304
8	Zinc plated screw	1	C4C
9	O-Ring	2	FPM
10	Black handle	1	Nylon glass filled 30%

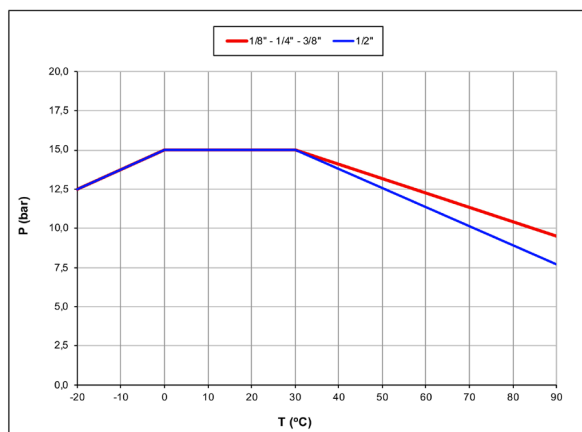


Code	S34AX0	S34BX0	S34CX0	S34DX0
D (inch)	1/8"	1/4"	3/8"	1/2"
DN (inch)	0.236	0.314	0.314	0.393
I (inch)	0.354	0.472	0.472	0.610
L (inch)	1.712	1.712	1.712	2.106
G (inch)	0.905	0.905	0.905	1.102
A (inch)	2.834	2.834	2.834	2.834
H (inch)	1.200	1.200	1.200	1.279
CH (inch)	0.826	0.826	0.826	0.984
Cv (GPM)	2.0	4.9	4.2	5.8



DN shows the nominal flow diameter.

### PRESSURE-TEMPERATURE CHART



### PRESSURE DROP CHART

