



s.21 DZR

**12 - 54 mm solder ends
for insulation
dezincification-resistant**

Several governmental authorities recommend use of special alloys for valves handling water in areas where there is a problem of dezincification.

RuB DZR valves are designed to meet such requirements. Through the use of new technology these valves retain the reliability and competitiveness of brass, but are comparable to bronze in corrosion resistance. Be kind with yourself, make sure the valve that brings you pure fresh water is an **RuB** DZR valve.



QUALITY

- 24h 100% seal test guaranteed
- Dual sealing system allows valve to be operated in either direction making installation easier
- No metal-to-metal moving parts
- No maintenance ever required
- Handle clearly shows ball position
- Silicone-free lubricant on all seals
- Chrome plated DZR brass ball for longer life
- Handle stops on body to avoid stress at stem

BODY

- Hot forged sand blasted DZR unplated body and cap sealed with Loctite® or equivalent thread sealant
- Dezincification resistant ADZ-T and ADZ-P brass approved to SBN- PFS 1983:2 and NR- BFS 1988:18 specifications

STEM

- Maintenance-free, double FPM O-rings at the stem for maximum safety

SEALING

- Pure PTFE self-lubricating seats with flexible-lip design

CONNECTIONS

- Solder ends to NS1759 and ISO 2016

FLOW

- Full port to DIN 3357 for maximum flow

HANDLE

- Geomet® carbon steel handle with thick PVC dip coating. Handle coating offers both thermal and electrical protection
- Handle removable with valve in service
- **WARNING:** do not exceed reasonable temperature and/or electrical load

WORKING PRESSURE & TEMPERATURE

- 16 bar (230 PSI) non-shock cold working pressure
- -40°C to +170°C (-40°F to +350°F)
- Applicable to valve, not to solder joints
- **WARNING:** freezing of the fluid in the installation may severely damage the valve

UPON REQUEST

- Stainless steel ball (1.4401 / AISI 316)
- Glass filled PTFE seals
- Custom design

PED DIRECTIVE

- The product described in this document meets the requirements of PED Directive 2014/68/UE and according to art.4 par.3, it does not require CE marking; it cannot be used with dangerous gases in sizes larger than 25mm

APPROVED BY OR IN COMPLIANCE WITH

- RoHS Compliant (EU)
- EAC – Declaration of conformity (Russia, Kazakhstan, Belarus)
- Kiwa-Swedcert (Sweden)
- Ri.se. / Boverket (Sweden)

NOTE: approvals apply to specific configurations/sizes only.

OPTIONS

- Oval lockable handle **1**
- Patented locking device **2**
- **RuB** memory stop designed to be installed with our stubby handle
- Stainless steel handle (1.4016 / AISI 430) **3**
- Stubby handle
- T-handle **4**

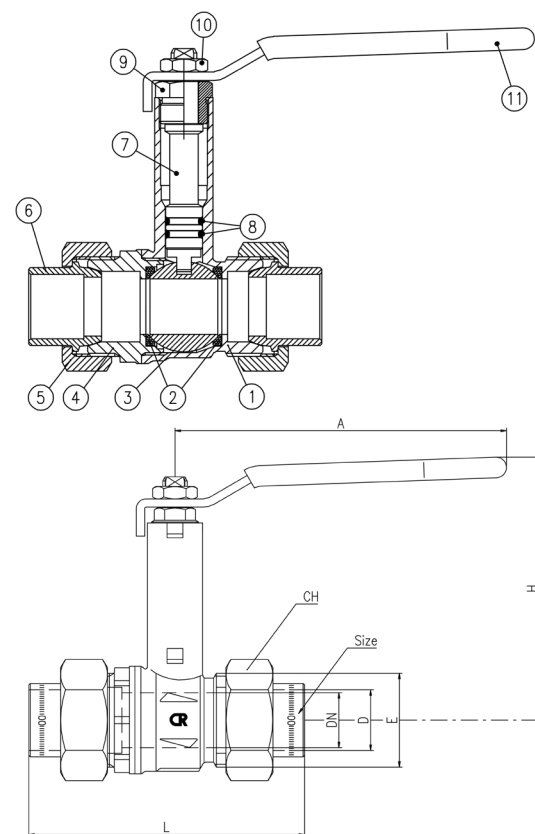


s.21 DZR XCES21 - 5813

Each user should perform his own tests to find out the suitability for his particular application. BONOMI INDUSTRIES makes no warranty, express or implied, as to the shape, fit or function of a product for any application. Contact us or consult with your supplier for additional information on the suitability of the BONOMI INDUSTRIES products with your specific field of use.



	Part description	Q.ty	Material
1	Unplated body	1	CW602N
2	Ball seat	2	PTFE
3	Chrome plated ball	1	CW602N
4	Unplated end-cap	1	CW602N
5	Unplated nut	2	CW617N
6	Unplated solder end hose	2	CC491K
7	Unplated extended stem O-ring design	1	CW602N
8	O-Ring	2	FPM
9	Unplated nut	1	CW617N
10	Geomet® nut	1	C4C (EN10263-2)
11	White PVC coated Geomet® steel handle	1	DD11 (EN10111)

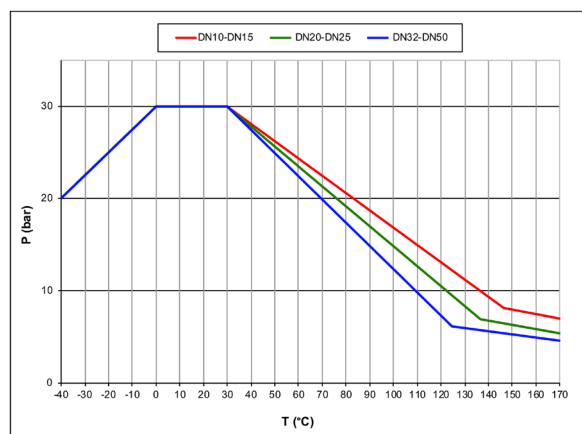


Hollow ball for D 35-42-54

Code	S21C12W	S21D15W	S21E18W	S21E22W	S21F28W	S21G35W	S21H42W	S21I54W
D (mm)	12	15	18	22	28	35	42	54
E (mm)	M22x1.5	M26x1.5	M34x1.5	M34x1.5	M40x2	M50x2	M55x2	M70x2
DN (mm)	10	15R	16R	20R	25R	32R	40R	50R
L (mm)	80	90	100	100	115	129	143	161
A (mm)	100	100	120	120	120	158	158	158
H (mm)	85	88	95	95	99	124	130	137
CH (mm)	26	30	38	38	46	55	62	78
Kv (m³/h)	9.6	28	42	42	70	80	125	179

DN shows the nominal flow diameter.

PRESSURE-TEMPERATURE CHART



The given data of the pressure-temperature chart refer to the valve body

PRESSURE DROP CHART

