



s.190

1/2" - 2"
ISO 228
with built-in filter

This ball valve with built-in vertical filter allows a large flow rate with a low pressure drop and supports a maximum pressure of 30 bar (PN).

This innovative product avoids the installation of two ball valves, before and after the filter. Quick and easy assembly, maintenance and cleaning.



QUALITY

- Substitutes 3 different components (2 ball valves and one filter)
- Reduces leakage risks due to lower sealing points
- Cost saving due to reduced number of components
- Time saving at installation and maintenance
- Built-in vertical filter with cartridge structure in AISI304 + Nylon (filtration degree: 500 microns / 35 mesh). Size 1/2" has a central rib to ease filter extraction.
- Final test conforming with UNI EN 12266-1 points A3 / A4 (for 1 1/2" and 2" sizes: acc. to directive 2014/68/UE)
- No metal-to-metal moving parts
- Handle clearly shows ball position
- Chrome plated brass ball for longer life
- Handle stop on body to avoid stress at stem

BODY

- Hot forged sand blasted, external nickel plated brass body and cap sealed with Loctite® or equivalent thread sealant
- Finest brass according to EN 12165 and EN 12164 specifications
- Bottom plug for an easy filter maintenance

STEM

- Blowout-proof unplated brass stem
- Two O-rings at the stem (FKM + NBR) for maximum safety

SEALING

- Pure PTFE seats

THREADS

- ISO 228 parallel female by female threads

FLOW

- Nominal port

HANDLE

- Zinc plated steel handle with plastic dip coating
- **WARNING:** do not exceed reasonable temperature and/or electrical load

WORKING PRESSURE & TEMPERATURE

- 30 bar (450 PSI) non-shock cold working pressure for sizes 1/2" to 1", 20 bar (290 PSI) for sizes 1 1/4" to 2"
- -20°C to +150°C (-4°F to +300°F)
- **WARNING:** freezing of the fluid in the installation may severely damage the valve

PED DIRECTIVE

- According to 2014/68/UE, 1 1/4" and superior sizes cannot be used with dangerous fluids

APPROVED BY OR IN COMPLIANCE WITH

- Water Regulations Advisory Scheme (United Kingdom)
- EAC – Declaration of conformity (Russia, Kazakhstan, Belarus)

NOTE: approvals apply to specific configurations/sizes only.

OPTIONS

- T-handle for 1/2" to 1" sizes.



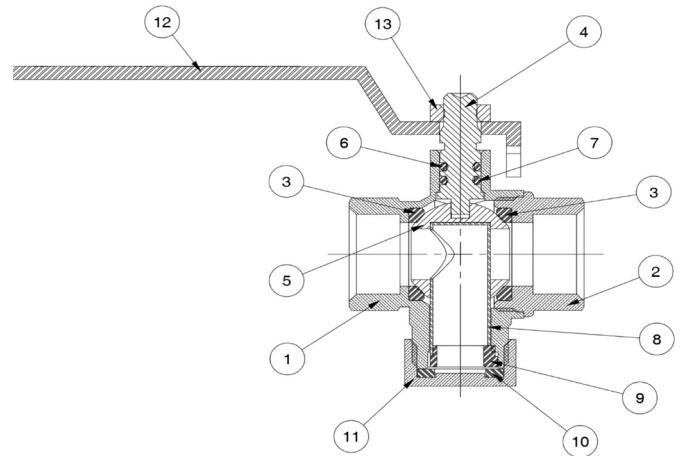
s.190 XCE190 - 5813

Each user should perform his own tests to find out the suitability for his particular application. BONOMI INDUSTRIES makes no warranty, express or implied, as to the shape, fit or function of a product for any application. Contact us or consult with your supplier for additional information on the suitability of the BONOMI INDUSTRIES products with your specific field of use.

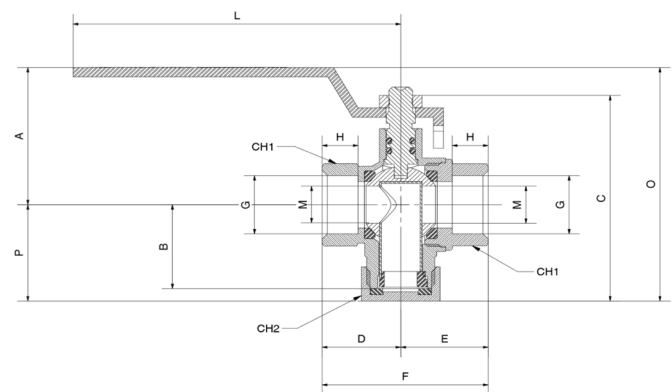


PLUMBING

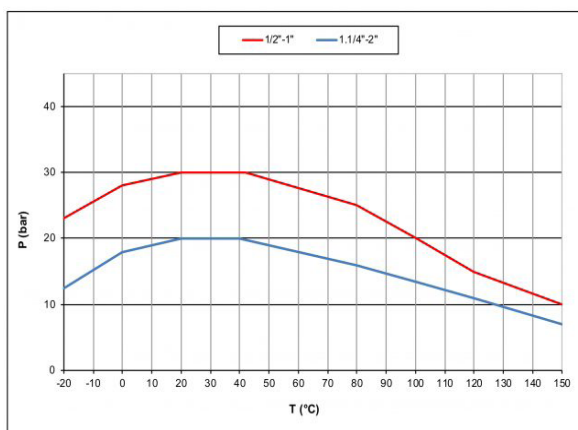
	Part description	Q.ty	Material
1	Nickel plated body (external treatment)	1	CW617N
2	Nickel plated end-cap (external treatment)	1	CW617N
3	Seat	1	PTFE
4	Unplated stem O-ring design	1	CW614N
5	Chrome plated ball	1	CW617N
6	O-Ring	1	NBR
7	O-Ring	1	FKM
8	Filter	1	AISI304 + Nylon
9	Filter	1	AISI304 + Nylon
10	Flat seal	1	NBR
11	Plug	1	CW614N
12	Black plastic coated zinc plated handle	1	Steel
13	Zinc plated nut	1	Steel



Code	190D00	190E00	190F00	190G00	190H00	190I00
Size (inch)	1/2"	3/4"	1"	1 1/4"	1 1/2"	2"
A (mm)	44,2	47,4	50,8	74	80	88,5
B (mm)	27	30,9	34,5	46,5	52,5	63,5
C (mm)	66,2	73,5	80,5	106	118	143
D (mm)	24	29	34,5	40	45,5	54
E (mm)	26,7	32,3	35,6	45	52	63
F (mm)	50,7	61,3	70,1	85	97,5	117
H (mm)	11	13	15	17	17	20
L (mm)	100	100	100	158	158	158
M (mm)	12	16	20	28	36	46
O (mm)	75,2	82,5	89,5	125,5	137,5	157
P (mm)	31	35,1	38,7	51,5	57,5	68,5
CH1 (mm)	25	31	38	48	54	66
CH2 (mm)	24	30	38	46	55	65
PN (bar)	30	30	30	20	20	20
Kv (m³/h)	3,22	5,58	5,97	10,12	17,14	32,3



PRESSURE-TEMPERATURE CHART



PRESSURE DROP CHART

