



s.126

Female/Female
3/8" - 2" swing check valve with rubber seals



EAC

QUALITY

- Suitable for domestic, industrial, pneumatic and hydraulic installations
- Strong configuration

BODY

- Hot forged brass body

SEALING

- Seals in NBR
- Compact inspection cap

THREADS

- ISO 228 female parallel thread

WORKING PRESSURE & TEMPERATURE

- 16 bar up to 3/4", 12 bar 1", 10 bar from 1 1/4" up to 2", non-shock cold working pressure
- 0°C to +90°C (+32°F to +194°F)
- **WARNING:** freezing of the fluid in the installation may severely damage the valve

PED DIRECTIVE

- The product described in this document meets the requirements of PED Directive 2014/68/UE and according to art .4 par.3, it does not require CE marking; it cannot be used with dangerous gases in sizes larger than 25 mm

APPROVED BY OR IN COMPLIANCE WITH

- EAC – Declaration of conformity (Russia, Kazakhstan, Belarus)

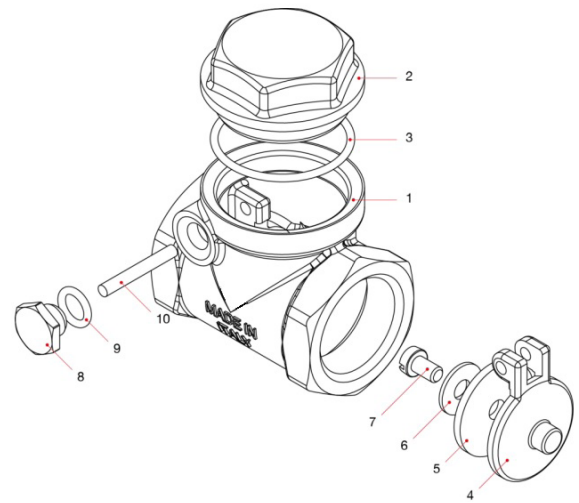
NOTE: approvals apply to specific configurations/sizes only.

s.126 XCE126 - 5813

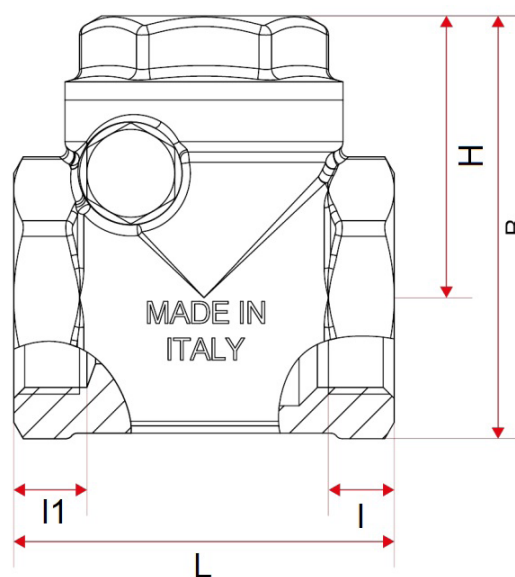
Each user should perform his own tests to find out the suitability for his particular application. BONOMI INDUSTRIES makes no warranty, express or implied, as to the shape, fit or function of a product for any application. Contact us or consult with your supplier for additional information on the suitability of the BONOMI INDUSTRIES products with your specific field of use.



	Part description	Q.ty	Material
1	Unplated body	1	CW617N
2	Unplated hexagonal cap	1	CW617N
3	Hexagonal cap O-ring	1	NBR
4	Bonnet	1	CW617N
5	Seal	1	NBR
6	Washer	1	CW508L
7	Screw	1	CW508L
8	Plug	1	CW614N
9	Plug O-ring	1	NBR
10	Nail	1	CW614N



Code	126C00	126D00	126E00	126F00	126G00	126H00	126I00
D (Size)	3/8"	1/2"	3/4"	1"	1 1/4"	1 1/2"	2"
DN (mm)	10	15	20	25	32	40	50
I (mm)	8	8	9	11,5	11,5	14,5	13
I1 (mm)	12	9,5	10	13	13	13	13,5
L (mm)	43	43	52	62	72	81	94
H (mm)	35	35	38,5	42	47	54	61
B (mm)	50	50	58	66	76	86	100
PN (Kg/cm ²)	16	16	16	12	10	10	10



Ask for additional information on the whole range of **RUB** products and consult with your supplier for special applications.
For complete disclaimer: www.rubvalves.com/disclaimer