



s.122

3/8" - 4"
ISO 228

heavy pattern brass check valve



QUALITY

- Suitable for domestic, industrial, pneumatic and hydraulic installations
- Performs well in any orientation
- Strong configuration suitable to most difficult applications
- Brass stem for outstanding performance
- Lowest pressure drop

BODY

- Hot forged CW617N brass body

SEALING

- NBR 65 SH/PS seal assembled with stainless steel holder

THREADS

- ISO 228 parallel female by female threads

WORKING PRESSURE & TEMPERATURE

- Cracking pressure: min 0.025 bar
- Sealing pressure: min 0.05 bar
- See non-shock cold working pressure on chart
- -20°C to +100°C (-4°F to +212°F)
- **WARNING:** freezing of the fluid in the installation may severely damage the valve

PED DIRECTIVE

- The product described in this document meets the requirements of PED Directive 2014/68/UE and according to art.4 par.3, it does not require CE marking; it cannot be used with dangerous gases in sizes larger than 20mm; it cannot be used with non-dangerous gases in sizes larger than 40mm

APPROVED BY OR IN COMPLIANCE WITH

- EAC – Declaration of conformity (Russia, Kazakhstan, Belarus)
- Attestation de Conformité Sanitaire (France) in sizes 1/4" to 2"
- RoHS Compliant (EU)

NOTE: approvals apply to specific configurations/sizes only.

OPTIONS

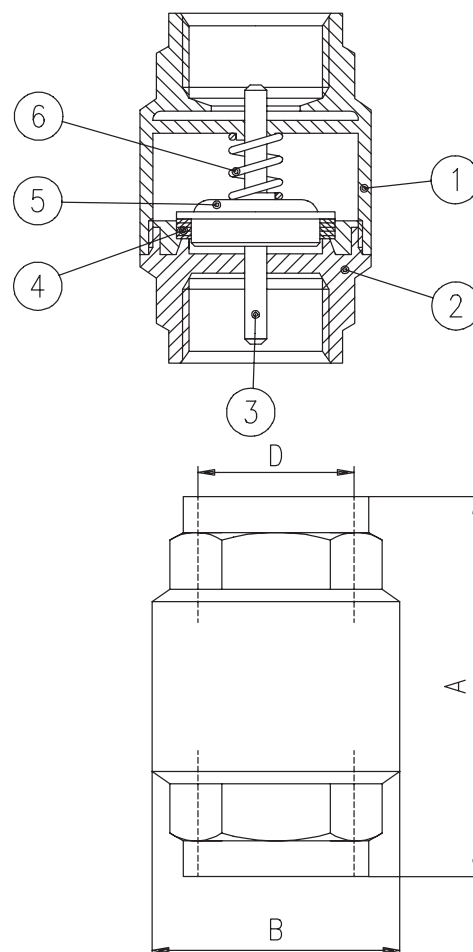
- Strainer in Polymer and Stainless steel 1.4301 (AISI 304)
- * NPT female by female threads ANSI B.1.20.1 in sizes 1/2" to 4"

s.122 XCE122 - 5466

Each user should perform his own tests to find out the suitability for his particular application. BONOMI INDUSTRIES makes no warranty, express or implied, as to the shape, fit or function of a product for any application. Contact us or consult with your supplier for additional information on the suitability of the BONOMI INDUSTRIES products with your specific field of use.

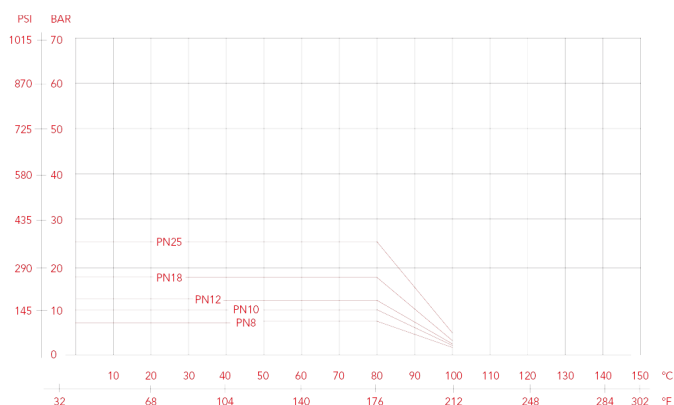


	Part description	Q.ty	Material
1	Body	1	CW617N
2	End-cap	1	CW617N
3	Stem	1	CW614N
4	Seat	1	NBR
5	Seat holder	1	1.4301 / AISI 304
6	Stainless steel spring	1	1.4325 / AISI 302



Code	122B00	122C00	122D00	122E00	122F00	122G00	122H00	122I00	122L00	122M00
Size (inch)	3/8"	1/2"	3/4"	1"	1 1/4"	1 1/2"	2"	2 1/2"	3"	4"
A (mm)	55	58.5	65	74.5	83	93	101	122	141.5	158.5
ØB (mm)	34.5	34.5	41.5	48	60.5	71	87	120	140	172
PN (Kg/cm2)	25	25	25	25	18	18	18	12	12	12

PRESSURE-TEMPERATURE CHART



PRESSURE DROP CHART

