



s.31 Mini Valve

Female/Female
1/4" - 3/4"

This newly engineered valve features all the good characteristics of the s.31 **RuB** mini valve, in particular:

QUALITY:

- 100% seal test guaranteed in according to EN12266-1 RATE A in either direction
- Compatible with most industrial fluids including those too viscous for pilot operated valves
- Dual sealing system allows valve to be operated in either direction making installation easier
- No metal-to-metal moving parts
- No maintenance ever required
- Silicone-free lubricant
- Chrome plated ball for longer life
- Can operate also in vacuum line

BODY:

- Finest brass according to EN 12165 and EN 12164 specifications
- Strong one piece body construction
- Mounting kit to be ordered sperately "KCPA0AA00100"

STEM:

- Blowout-proof brass stem
- Maintenance-free, double FPM O-rings at the stem for maximum safety

SEALING:

- Pure PTFE self-lubricating seats

THREADS:

- EN 10226-1, ISO 228 parallel female by female threads



WORKING PRESSURE AND TEMPERATURE:

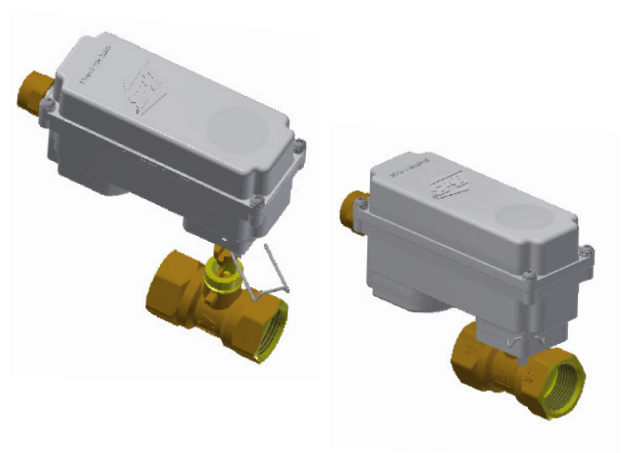
- Shell rating: 40 bar (600 PSI) non-shock cold working pressure
- Seat rating: Delta P max permissible 16 bar (230 PSI)
- -20°C to +120°C (-4°F to +250°F)
- **WARNING:** freezing of the fluid in the installation may severely damage the valve

APPROVED BY OR IN COMPLIANCE WITH:

- RoHS Compliant (EU)
- EAC – Declaration of conformity (Russia, Kazakhstan, Belarus)

NOTE: approvals apply to specific configurations/sizes only.

Quick Connection with CP actuators



s.31 XCE3100 - 5466

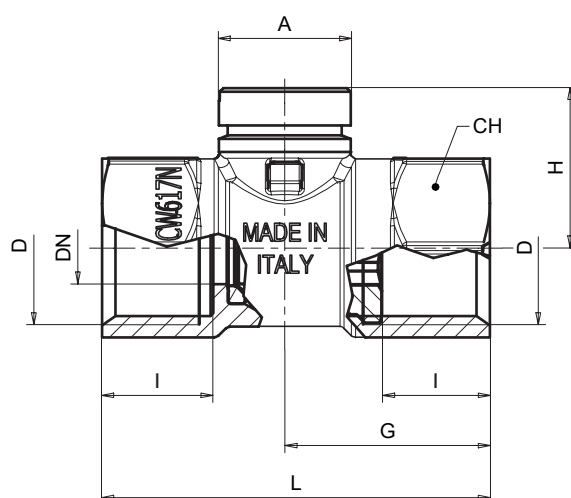
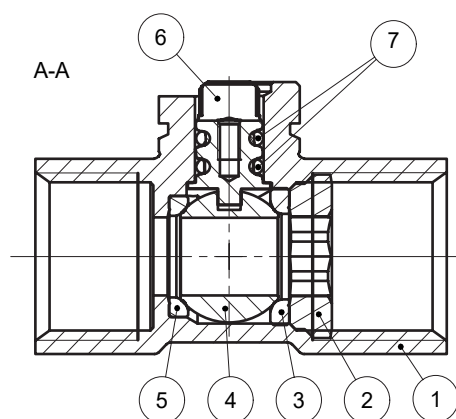
Each user should perform his own tests to find out the suitability for his particular application. BONOMI INDUSTRIES makes no warranty, express or implied, as to the shape, fit or function of a product for any application. Contact us or consult with your supplier for additional information on the suitability of the BONOMI INDUSTRIES products with your specific field of use.



ACTUATION

	Part description	Q.ty	Material
1	Sand blasted unplated NPT body	1	CW617N
2	Unplated retainer nut	1	CW617N
3	Retainer seat	1	PTFE
4	Chrome plated ball	1	CW617N
5	Body seat	1	PTFE
6	Unplated stem O-Ring design	1	CW617N
7	O-Ring	2	FPM

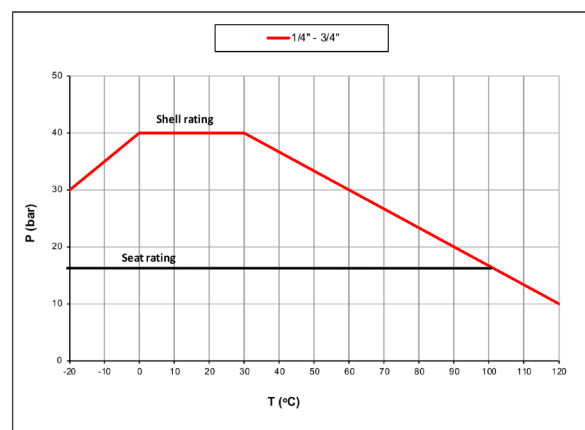
Code	AV31BF3	AV31CF3	AV31DF3	AV31EF3
D (inch)	1/4"	3/8"	1/2"	3/4"
DN (mm)	8	10	10	12.7
I (mm)	12	12	15.5	17
L (mm)	45.5	45.5	53.5	61.5
G (mm)	23.8	23.8	28	32.5
A (mm)	18.5	18.5	18.5	18.5
H (mm)	22.5	22.5	22.5	25.5
CH (mm)	25	25	25	31
Kv (m3/h)	5.8	9.5	9.5	25.4



TORQUE FOR ACTUATOR SIZING N.M

Delta P -->	0 ÷ 16 bar
Valve size	N.m
1/4" ÷ 1/2"	1.8
3/4"	2.5

PRESSURE-TEMPERATURE CHART



TORQUE CORRECTION FACTORS

Valve torque can vary according to operating frequency, temperature and friction characteristics of the media.

If media has more or less friction than water, multiply torque by the following factors:

Lubricating oils or liquids	0.8
Dry gases, natural gas	1.5
Slurries or liquids bearing abrasive particles	1.5 ÷ 2.5

PRESSURE DROP CHART

