



k.60

**Female/Female
1/4" - 2"**

EN 10226-1, heavy duty DIN 16722 M3

HIGH TEMPERATURE RESISTANCE

Now approved for HTB use (Hochtemperaturbeständigkeit)

Class B 0,1 (0,1 bar @650°C for at least 30 minutes).



H2 READY: product approved in EU acc.to EN331 (sizes 1/4" to 2") for the 1st, 2nd and 3rd gas families, therefore compatible with hydrogen use up to 50% in the gas mixture, as established in the 1st gas family of the EN437 (ref. G110)

QUALITY

- 24h 100% seal test guaranteed
- Dual sealing system allows valve to be operated in either direction making installation easier
- No metal-to-metal moving parts
- No maintenance ever required
- Handle clearly shows ball position
- Silicone-free lubricant on all seals
- Chrome plated brass ball for longer life
- Handle stops on body to avoid stresses at stem

BODY

- Hot forged sand blasted, nickel plated brass body and cap sealed with Loctite® or equivalent thread sealant
- Valve length according to DIN 16722 M3 for sizes from 3/8" to 2" (DN10 to DN50). Size 1/4" (DN 8) complies to DIN 3202 M3.
- Finest brass according to EN 12165 and EN 12164 specifications

STEM

- Blowout-proof nickel plated brass stem
- Maintenance-free, double FPM O-rings at the stem for maximum safety

SEALING

- Pure PTFE self-lubricating seats with flexible-lip design

THREADS

- EN 10226-1, ISO 228 parallel female by female threads

FLOW

- 100% full port for maximum flow

OPTIONS

- Stem extension
- Oval lockable handle ①
- **RuB** memory stop designed to be installed with our stubby handle ②
- Stainless steel handle (1.4016 / AISI 430) ③
- Stubby handle ④
- T-handle ⑤
- Patented locking device



HANDLE

- Geomet® carbon steel handle with thick PVC dip coating. Handle coating offers both thermal and electrical protection
- **WARNING:** do not exceed reasonable temperature and/or electrical load

WORKING PRESSURE & TEMPERATURE

- 65 bar (940 PSI) up to 1"; 40 bar (600 PSI) over 1" non-shock cold working pressure
- -40°C to +170°C (-40°F to +350°F)
- For use with dangerous fluids temperature rating is -20°C to +60°C (-4°F to +140°F) and pressure rating is 5 bar (72 PSI) / **HTB** Class B 0,1
- **WARNING:** freezing of the fluid in the installation may severely damage the valve

UPON REQUEST

- Stainless steel ball (1.4401 / AISI 316)
- Glass filled PTFE seals
- Custom design

PED DIRECTIVE

- Assessment according to Pressure Equipment Directive 2014/68/UE module B+D by ICIM (0425)

APPROVED BY OR IN COMPLIANCE WITH

- SVGW (Switzerland)
- RoHS Compliant (EU)
- DVGW (Germany) – MOP 5 B 0,1
- EAC – Declaration of conformity (Russia, Kazakhstan, Belarus)

NOTE: approvals apply to specific configurations/sizes only.

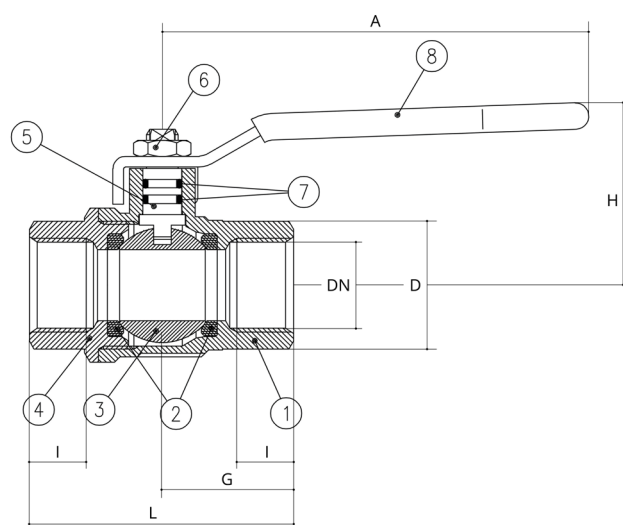


K.60 XCEK60 - 5813

Each user should perform his own tests to find out the suitability for his particular application. BONOMI INDUSTRIES makes no warranty, express or implied, as to the shape, fit or function of a product for any application. Contact us or consult with your supplier for additional information on the suitability of the BONOMI INDUSTRIES products with your specific field of use.



Part description	Q.ty	Material
1 Nickel plated body	1	CW617N
2 Seat	2	PTFE
3 Chrome plated ball	1	CW617N
4 Nickel plated end-cap	1	CW617N
5 Nickel plated stem O-ring design	1	CW617N
6 Geomet® nut	1	C4C (EN10263-2)
7 O-Ring	2	FPM
8 Yellow PVC coated Geomet® steel handle	1	DD11 (EN10111)



1 1/4"-2" hollow ball

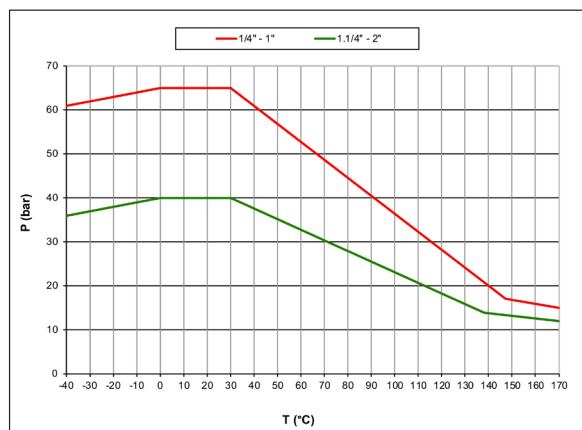
Compliant to CE 2014/68/UE product
Equipment category III Module B+D

Code	S60B05	S60C05	S60D05	S60E05	S60F05	S60G05	S60H05	S60I05
D (inch)	1/4"	3/8"	1/2"	3/4"	1"	1 1/4"	1 1/2"	2"
DN (mm)	8	10	15	20	25	32	40	50
I (mm)	14	14	16.5	19	22	25	26	29
L (mm)	50	60	75	80	90	110	120	140
G (mm)	25,5	25,5	30,5	37	45,5	52	59	67,5
A (mm)	82	82	100	120	120	158	158	158
H (mm)	40	40	43	51	55,5	75	81	88
CH (mm)	22	22	27	32	41	50	55	70
PN (bar)	65	65	65	65	65	40	40	40
Kv (m3/h)	4,1	8,7	28	60	100	95	179	233

Ball valves are marked CE on handle from 1 1/4" to 2" as follow:

CE 0425 cat IIIB+D PS: 5 GAS TS1: -20°C TS2: +60°C

PRESSURE-TEMPERATURE CHART



PRESSURE DROP CHART

