



# s.7600L

## 3-way, lever, 2 seats, L-port (diverting)

Female/Female/Female  
1/4" - 2"  
EN 10226-1



The RuB s.7600L is the right choice for fluid diversion and is designed with robust maintenance-free components ensuring ease of operation and safety. With a simple 90° turn, you can divert flow from one downstream outlet to the other. It combines traditional manual operation with modern automation. It is also very easy to convert from its sturdy lever handle to ISO 5211 actuator flange assembly. It features low operating torque and a special wear reducing self-compensating valve seat design that meets our 100,000 cycle life test requirement. The valve can be purchased separately, with handle or with a RuB actuator already mounted.

### QUALITY

- Electronic 100% seal test guaranteed for maximum safety
- No metal-to-metal moving parts
- No maintenance ever required
- Silicone-free lubricant on all seals
- Chrome plated brass ball for longer life
- Each valve is seal tested for maximum safety
- Performs well in any orientation
- Strong configuration

### BODY

- Hot forged sand blasted, external nickel plated brass body and cap sealed with Loctite® or equivalent thread sealant
- Integrated ISO5211 / DIN3337 mounting flange for universal connection to actuator
- Finest brass according to EN 12165 and EN 12164 specifications
- 3-way L-port design for flow diversion

### STEM

- Blowout-proof nickel plated brass stem
- Maintenance-free, double O-rings at the stem for maximum safety

### SEALING

- Reinforced PTFE self-lubricating seats with flexible-lip and wear compensation design

### THREADS

- EN 10226-1, ISO 228 parallel female by female threads

### FLOW

- 100% full port for maximum flow

### HANDLE

- Geomet® carbon steel handle with thick PVC dip coating. Handle coating offers both thermal and electrical protection
- Handle removable with valve in service
- **WARNING:** do not exceed reasonable temperature and/or electrical load

### WORKING PRESSURE & TEMPERATURE

- 20 bar (300 PSI) non-shock cold working pressure
- -20°C to +150°C (-4°F to +302°F)
- **WARNING:** freezing of the fluid in the installation may severely damage the valve

### UPON REQUEST

- Custom design
- Stainless steel stem (1.4401/ AISI 316)
- Configurations with 4 seats & T-port (s.7300L) or 2 seats & L-port (s.7600L)

### PED DIRECTIVE

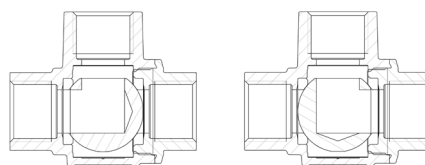
- The product meets the requirements of PED Directive 2014/68/UE and according to art.4 par.3, it does not require CE marking.

### APPROVED BY OR IN COMPLIANCE WITH

- RoHS Compliant (EU)
- EAC – Declaration of conformity (Russia – Kazakhstan – Belarus)

**NOTE:** approvals apply to specific configurations/sizes only.

S.76 3-WAY "L" PORT OPERATING POSITIONS



### OPTIONS

- Rack and pinion pneumatic actuator (spring return or double acting)
- Compact Power electric actuator
- ISO 7/1, BS 21 BSPT taper female threads
- S.7600 without handle, actuator ready
- Various actuator linkage kit



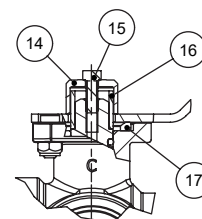
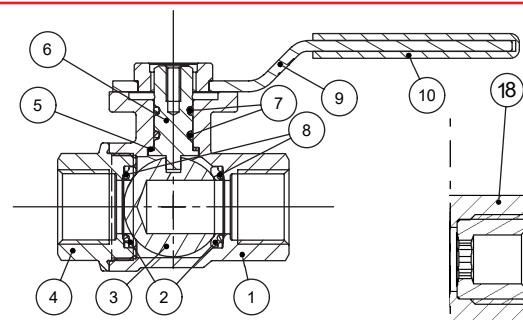
## s.7600L XCES7600L - 5813

Each user should perform his own tests to find out the suitability for his particular application. BONOMI INDUSTRIES makes no warranty, express or implied, as to the shape, fit or function of a product for any application. Contact us or consult with your supplier for additional information on the suitability of the BONOMI INDUSTRIES products with your specific field of use.

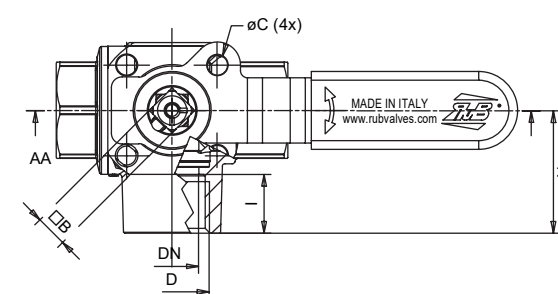
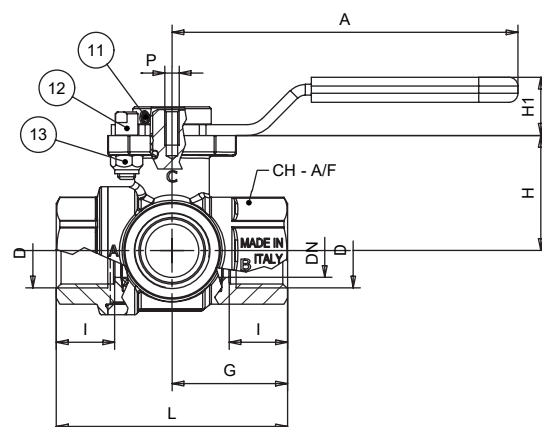


INDUSTRY

Part description		Q.ty	Material
1	Nickel plated body (External nickel plated, unplated inside)	1	CW617N
2	Seat	2	PTFE graphite filled 15%
3	Chrome plated ball	1	CW617N
4	Sand blasted nickel plated end cap (External nickel plated, unplated inside)	1	CW617N
5	Washer	1	PTFE carbon filled 25%
6	Nickel plated stem O-ring design	1	CW617N
7	O-Ring	2	FPM
8	O-Ring	2	FPM
9	Geomet® plated steel handle	1	DD11 (EN10111)
10	Black dipped coating	1	PVC
11	Stainless steel screw	1	1.4301 / AISI304
12	Unplated stop	1	CW617N
13	Zinc plated steel nut	1	Class 8 (UNI7474)
14	Unplated cap	1	CW614N
15	Stainless steel Exagonal screw	1	1.4301 / AISI304
16	Square adaptor 11-14 (only for 1 1/4 size)	1	Steel
17	Washer	1	PTFE
18	Unplated reduction (only 1/4" and 3/8" sizes)	3	CW617N



1.1/4"-1.1/2"-2" handle configuration



Code	S76B00L	S76C00L	S76D00L	S76E00L	S76F00L	S76G00L	S76H00L	S76I00L
Size (inch)	1/4"	3/8"	1/2"	3/4"	1"	1 1/4"	1 1/2"	2"
DN (mm)	8	10	15	20	25	30.4	38	48
I (mm)	12	12	16.5	19	22.5	25	26	29
L (mm)	65	65	65	79	92.5	109.5	126	150
G (mm)	32.5	32.5	32.5	39.5	46.5	55	63	75
H (mm)	32.5	32.5	32.5	39.5	42.5	56	63.2	72
N (mm)	34.5	34.5	34.5	42	49.5	60	69	82
A (mm)	97	97	97	97	97	145	145	145
ØC (mm)	Ø5.6	Ø5.6	Ø5.6	Ø5.6	Ø5.6	Ø6.6	Ø6.6	Ø6.6
H1 (mm)	16.5	16.5	16.5	16.5	16.5	23	23	23
Square B (mm)	9	9	9	9	9	11	11	14
CH A/F (mm)	27	27	27	32	41	50	55	70
Flange connection DIN ISO 522 DIN 3337	F03	F03	F03	F03	F03	F05	F05	F05
P (ISO 262 Thread)	M4	M4	M4	M4	M4	M5	M5	M5
Kv (m³/h)	TBD	TBD	5.7	11.1	16.7	28.1	44.5	71.1

## TORQUE FOR ACTUATOR SIZING N.M

Delta P -->	0÷16 bar	
	to open	to close
14" - 3/8" - 1/2"	3,5	3,5
3/4"	4,0	4,0
1"	4,5	4,5
1 1/4"	11,7	11,7
1 1/2"	21,5	21,5
2"	28,0	28,0

## TORQUE CORRECTION FACTORS

Valve torque can vary according to operating frequency, temperature and friction characteristics of the media.

If media has more or less friction than water, multiply torque by the following factors:

Lubricating oils or liquids	0.8
Dry gases, natural gas	1.5
Slurries or liquids bearing abrasive particles	1.5÷2.5

## PRESSURE DROP CHART

