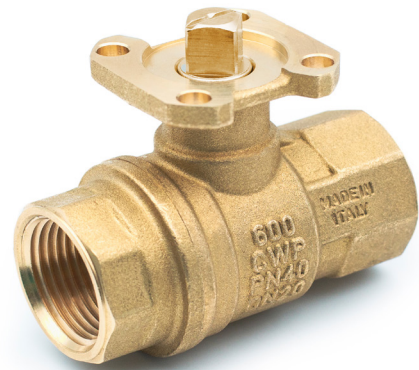




# s.465

**Female/Female  
ISO 5211  
full port 1/2" - 1"  
hot forged lead free brass ball valve**



## QUALITY

- Dual sealing system allows valve to be operated in either direction making installation easier
- No metal-to-metal moving parts
- No maintenance ever required
- Silicone-free lubricant on all seals
- Chrome plated brass ball for longer life
- 100% seal test guaranteed in according to EN 12266-1 RATE A (intended when the product is in brand new condition)

## BODY

- Hot forged sand blasted, unplated lead free brass body and cap sealed with Loctite® or equivalent thread sealant
- Integrated ISO 5211 and DIN 3337 mounting flange for universal connection to actuator
- Finest brass according to EN 12165 and EN 12164 specifications

## STEM

- Blowout-proof unplated lead free brass stem
- Maintenance-free, double EPDM O-rings at the stem for maximum safety

## SEALING

- Pure PTFE self-lubricating seats with flexible-lip design and wear compensation design

## THREADS

- EN 10226-1 parallel female by female threads

## OPERATING MECHANISM

- Integrated sturdy ISO 5211 flange allows direct mounting of electric and pneumatic actuators, with no bracket or coupling required. See RuB line of electric and pneumatic actuators

## OPTIONS

- Rack and pinion pneumatic actuator (spring return or double acting)
- Compact power electric actuator



## FLOW

- Full port to DIN 3357 for maximum flow

## WORKING PRESSURE & TEMPERATURE

- Shell rating: 40 bar (600 PSI) non shock cold working pressure
- Seat rating: Delta P max permissible 16 bar (230 PSI) non shock cold working pressure
- -20°C to +150°C (-4°F to +302°F)
- \* Limitations for potable water use: 10 bar (Kg/cm<sup>2</sup>) non- shock cold working pressure and +2°C / +65°C temperature (occasional excursions up to 85°C are permitted for a period of 1 h maximum)
- **WARNING:** freezing of the fluid in the installation may severely damage the valve

## UPON REQUEST

- Custom design
- NPT taper ANSI B.1.20.1 female by female threads, unplated body

## PED DIRECTIVE

- The product meets the requirements of PED Directive 2014/68/UE and according to art.4 par.3, it does not require CE marking

## APPROVED BY OR IN COMPLIANCE WITH

- RoHS Compliant (EU)

NOTE: approvals apply to specific configurations/sizes only.

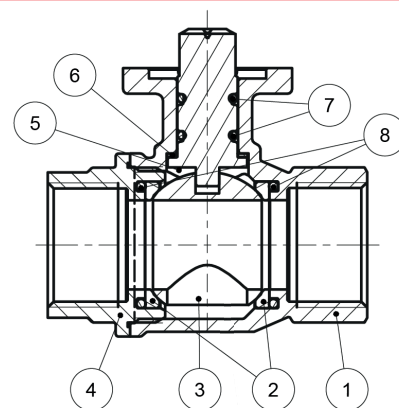
## s.465 XCE46501 - O

Each user should perform his own tests to find out the suitability for his particular application. BONOMI INDUSTRIES makes no warranty, express or implied, as to the shape, fit or function of a product for any application. Contact us or consult with your supplier for additional information on the suitability of the BONOMI INDUSTRIES products with your specific field of use.



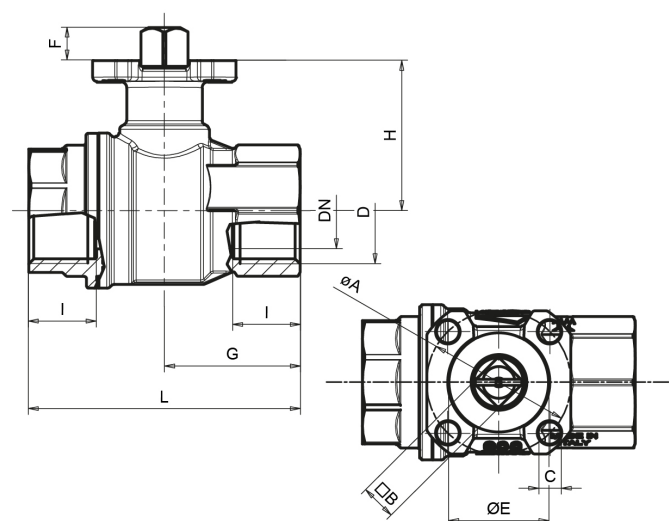
ACTUATION

	Part description	Q.ty	Material
1	Unplated body	1	CW511L
2	Seat	2	PTFE
3	Chrome plated ball with rinse hole (rinse hole on sizes from 3/4" up to 1")	1	CW511L
4	Unplated end-cap	1	CW511L
5	Unplated stem O-ring design	1	CW511L
6	Washer	1	PTFE carbon filled 25%
7	O-Ring	2	EPDM
8	O-Ring	2	EPDM



DN shows the nominal flow diameter. Actual flow diameter complies with full port DIN 3357 part 4.

Code	S465D00	S465E00	S465F00
D (inch)	1/2"	3/4"	1"
DN (mm)	15	20	25
I	15.5	17	21
L	63.5	68	85
G	31.5	34	42.5
ØA	36	36	36
□B (mm)	9	9	9
C	5.6	5.6	5.6
ØE	25	25	25
F	7.3	8.3	8.3
H	31	38	41.3
CH	25	31	40
Flange connection DIN ISO 522 DIN 3337	F03	F03	F03
Kv (m3/h)	28	36	62



### TORQUE FOR ACTUATOR SIZING N.M

Delta P -->	0÷16 bar	
Valve size	to open	to close
1/2"	3,5	3
3/4"	4,2	3,7
1"	4,5	4

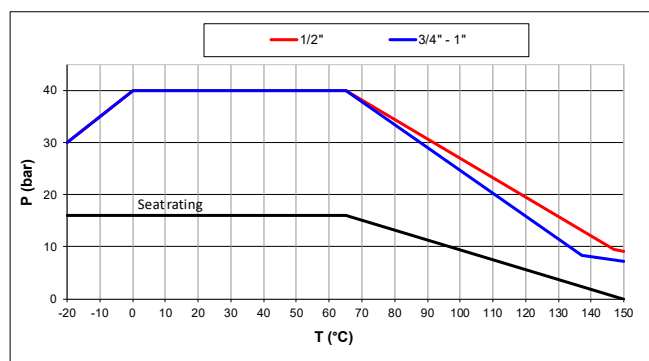
### TORQUE CORRECTION FACTORS

Valve torque can vary according to operating frequency, temperature and friction characteristics of the media.

If media has more or less friction than water, multiply torque by the following factors:

Lubricating oils or liquids	0.8
Dry gases, natural gas	1.5
Slurries or liquids bearing abrasive particles	1.5÷2.5

### PRESSURE-TEMPERATURE CHART



### PRESSURE DROP CHART

