



BONOMITM **INDUSTRIES**



Rev.09/2024



**About
US**

**Production
& Quality**

**Products
& Services**

Sustainability

**Sales &
Financials**

ABOUT US

BONOMI INDUSTRIES products are installed on five continents in highly severe applications. Our sales team promotes long-lasting relationships with distributors and OEMs offering quick feedback and technical support.

First class certified products, coupled with an understanding of local culture and regulations set us apart from most competitors, making **BONOMI** INDUSTRIES an easy choice choice for our customers.

In North America and Japan, wholly owned local subsidiaries with local teams and logistics services, enhance our presence and brand recognition.

VISION
MISSION
and **VALUES**

HISTORY

PEOPLE

**COMPANY
STRUCTURE**

**PRODUCTION
SITE**

**BUSINESS
CODE**





BONOMI INDUSTRIES is a manufacturer of high quality shut-off brass valves and actuators for a variety of applications, as well as engineered custom products.

BONOMI INDUSTRIES is part of Hadron, a private holding company which was established in 2018 as part of the reorganization of former

Rubinetterie utensilerie Bonomi. In that context, real estate company Shedstone was also started. Bonomi, the owners family name, continues to be the core of our brand since its foundation in 1828.

The family, strongly supports the healthy growth of the group with heavy investments in new technology for machining, assembly and logistics, an expansion of the manufacturing site, major upgrade of interconnectivity among equipment and ERP systems, employee motivational and carrier planning programs, improved customer support and stronger R&D and engineering professionalism.





RUB, Inc. is the North American headquarters for **RUB** brass shut-off valves and actuators. Our new facility, built in 2014 in Shakopee, MN, features a 50,000 sq. ft. warehouse with 5-tier racking and state of the art wireless inventory management system controlled by an SAP ERP system.

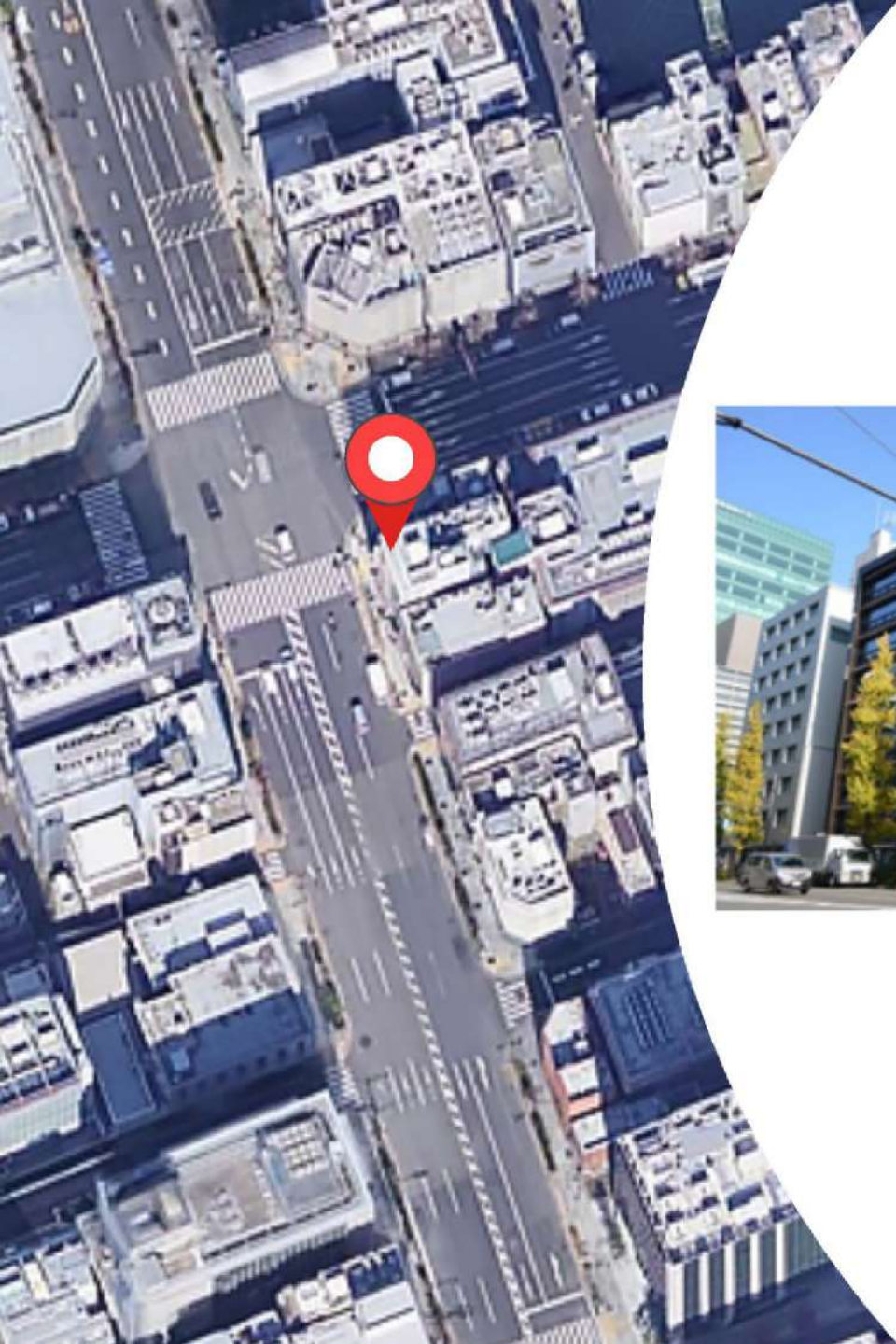
All brass ball valves are 100% manufactured in Italy at our plant in Brescia. We are a family owned company that has been expanding our global presence and high-quality reputation as a premier ball valve manufacturer for over 65 years exceeding customer expectations in quality, service and reliability.

Our manufacturing operation is highly automated and every product is tested according to the most rigorous standards before leaving the production plant, such as our 100% 24-hour dual seal test, and then shipped to **RUB, Inc.** in Shakopee, MN, USA, to serve the North American markets.

We offer forged brass ball valves from 1/8" to 4" in both standard and custom configurations for Oil, Water, Gas, and Industrial applications. We also stock stainless steel ball valves up to 8" and a complete actuation line for all of our actuatable brass and stainless-steel products.

All standard **RUB** branded Italian made brass ball valves have a limited lifetime warranty from defects in material and workmanship. For other products, we offer a 2-year limited warranty from the product date code.





RuB kk is the Japanese subsidiary of **BONOMI INDUSTRIES**, established in April 2007 with the aim of providing Japanese customers with local support, highest-quality service and reinforce the cooperation with the main market players.

RuB kk operates as an efficient distribution hub, thanks to a lean structure and a local warehouse located in Tokyo.



Vision

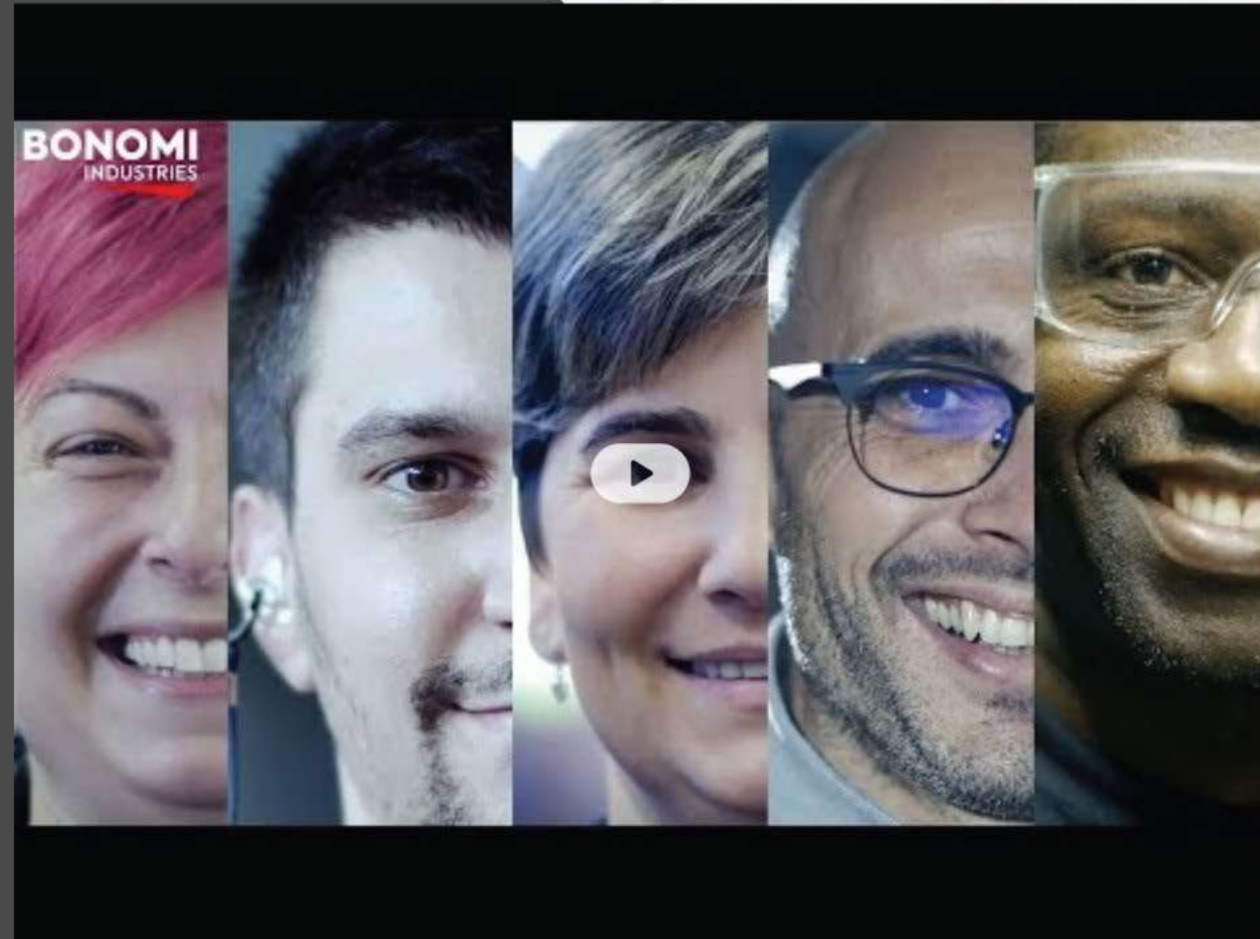
We are a Family Company
innovating the Fluid Control
market with products that
guarantee you peace of mind for life.

Mission

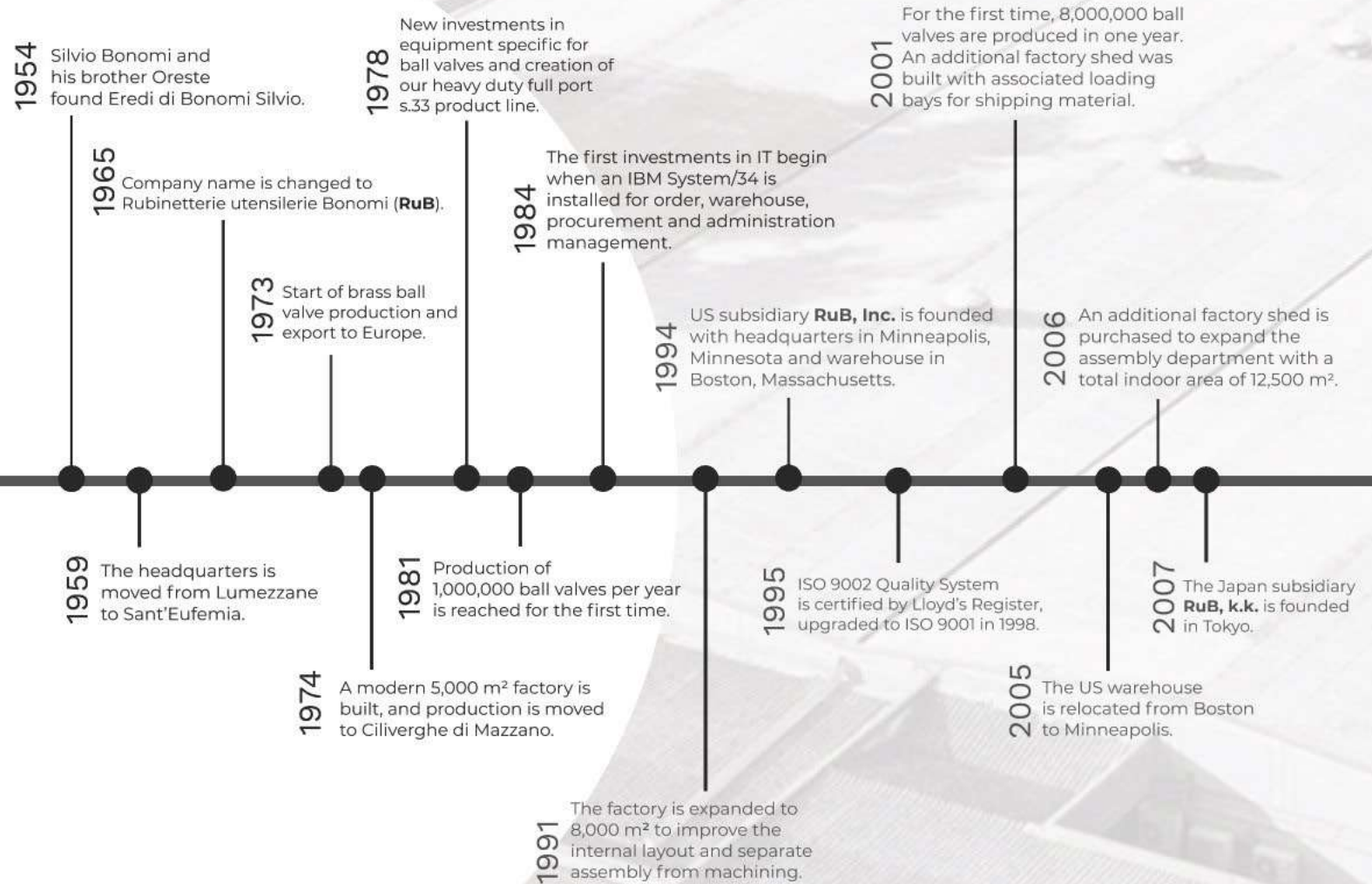
We innovate Fluid Control to safeguard
People and the **Planet**.
Anytime, anywhere.

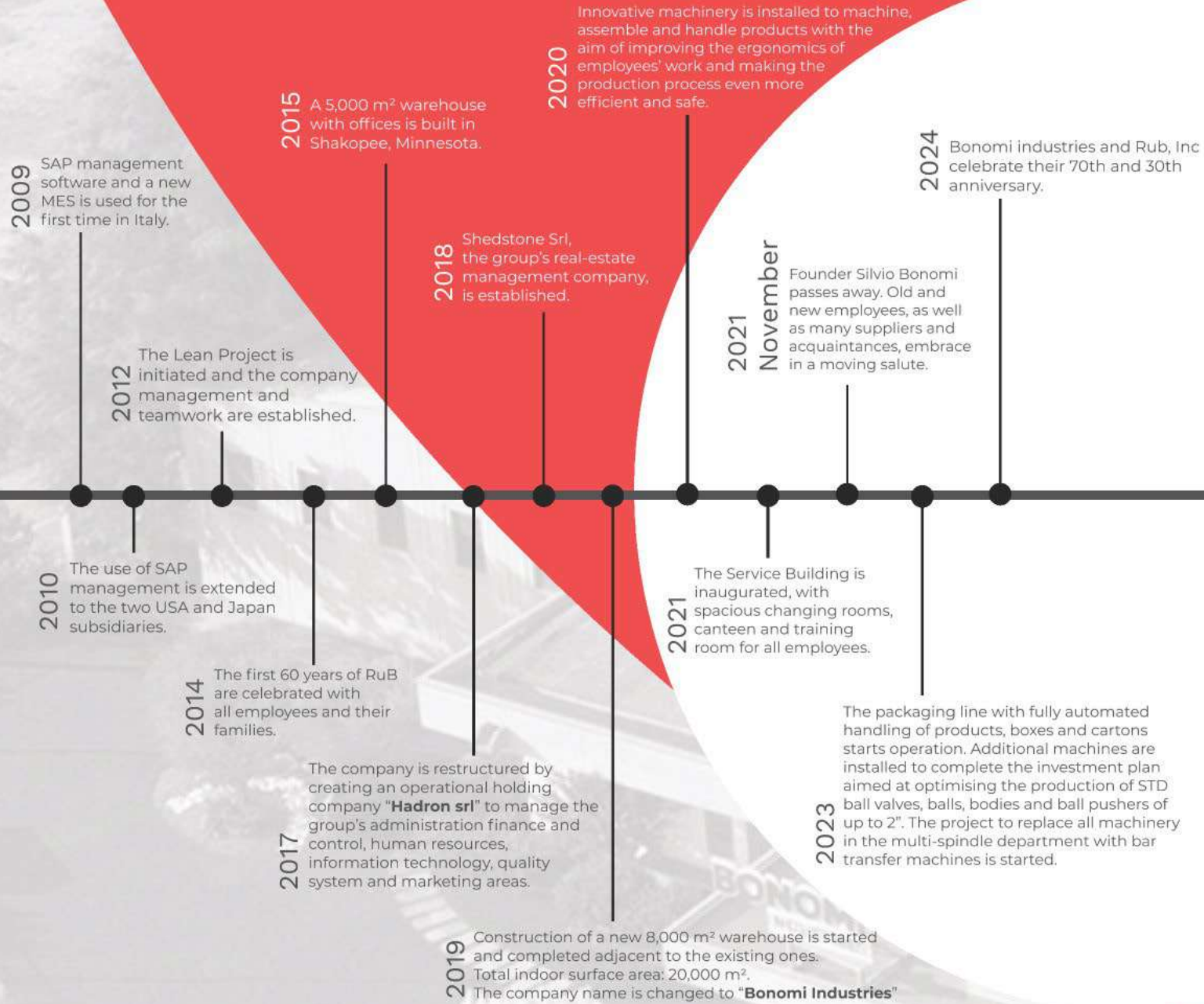
Values

Focus on the Future
Collaboration
Customer Orientation
Proactivity
Respect and Responsibility



HISTORY

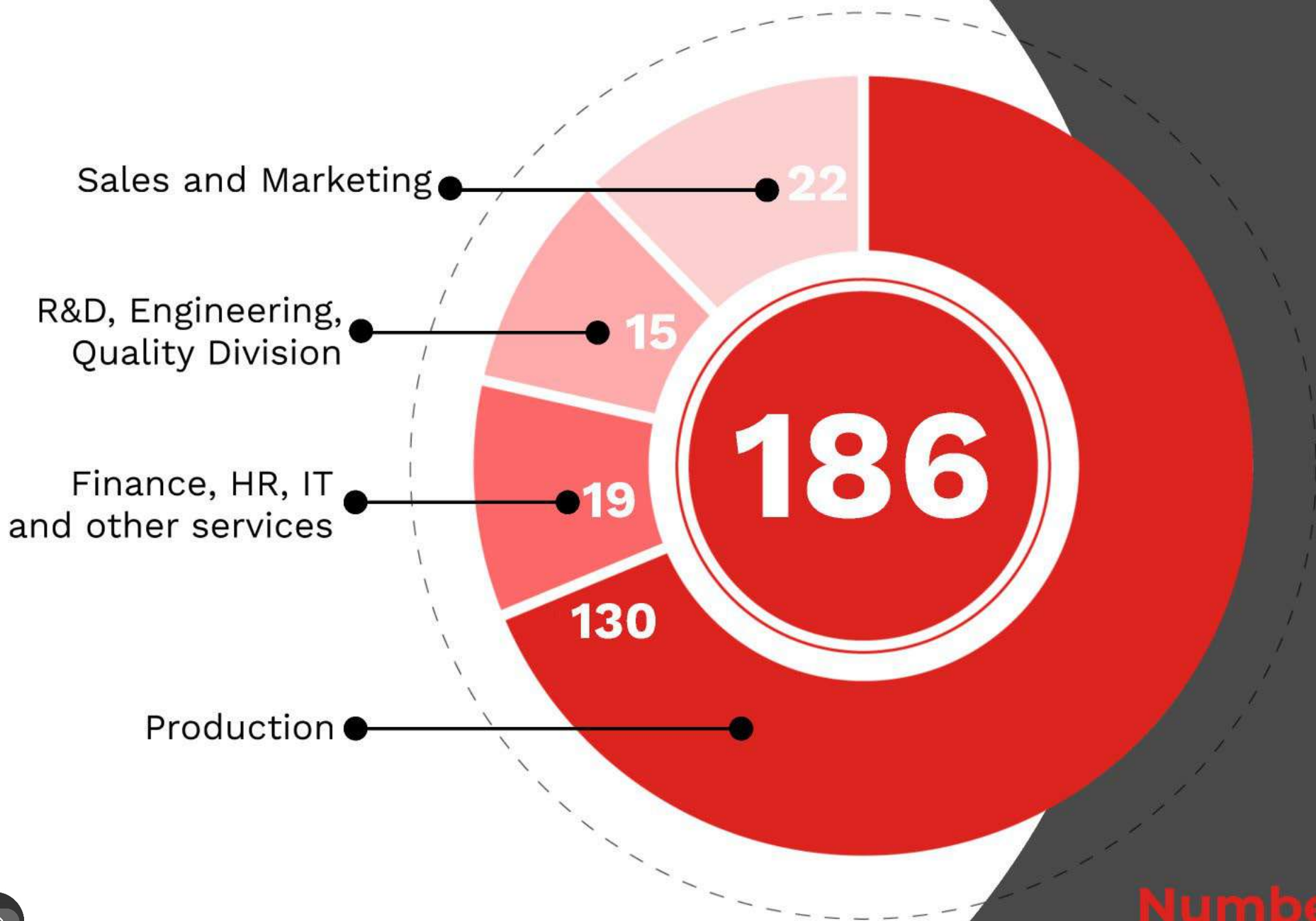






People with strong experience within each specific department and constantly trained, are the **roots of our company**. In **BONOMI INDUSTRIES** we all embrace a LEAN approach to work in the most straightforward way. We believe best solutions are made of simple ideas.





Number of employees



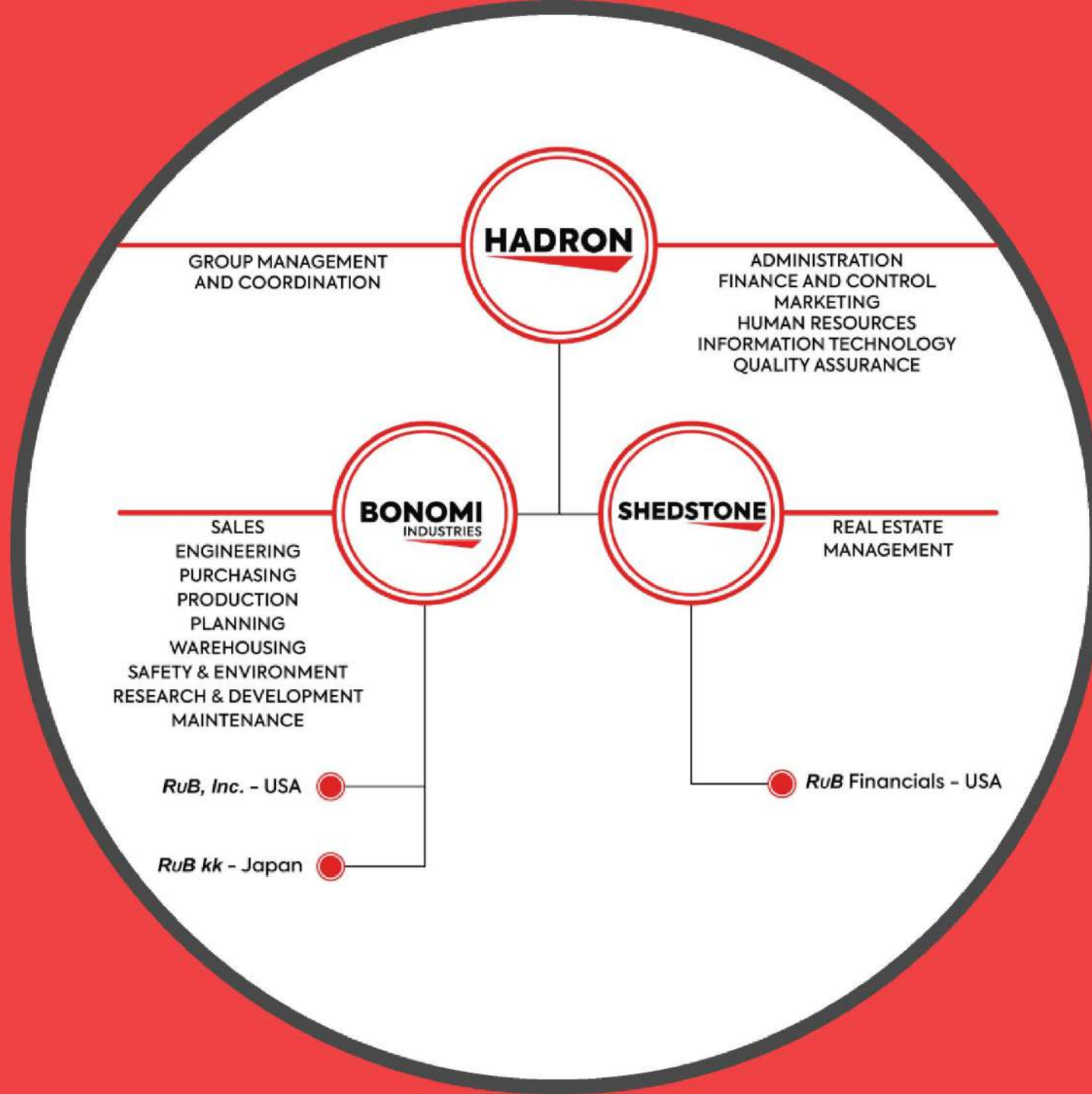
AVERAGE AGE
BONOMI INDUSTRIES + Hadron

42 years

AVERAGE TIME WITH COMPANY
BONOMI INDUSTRIES + Hadron

8 years

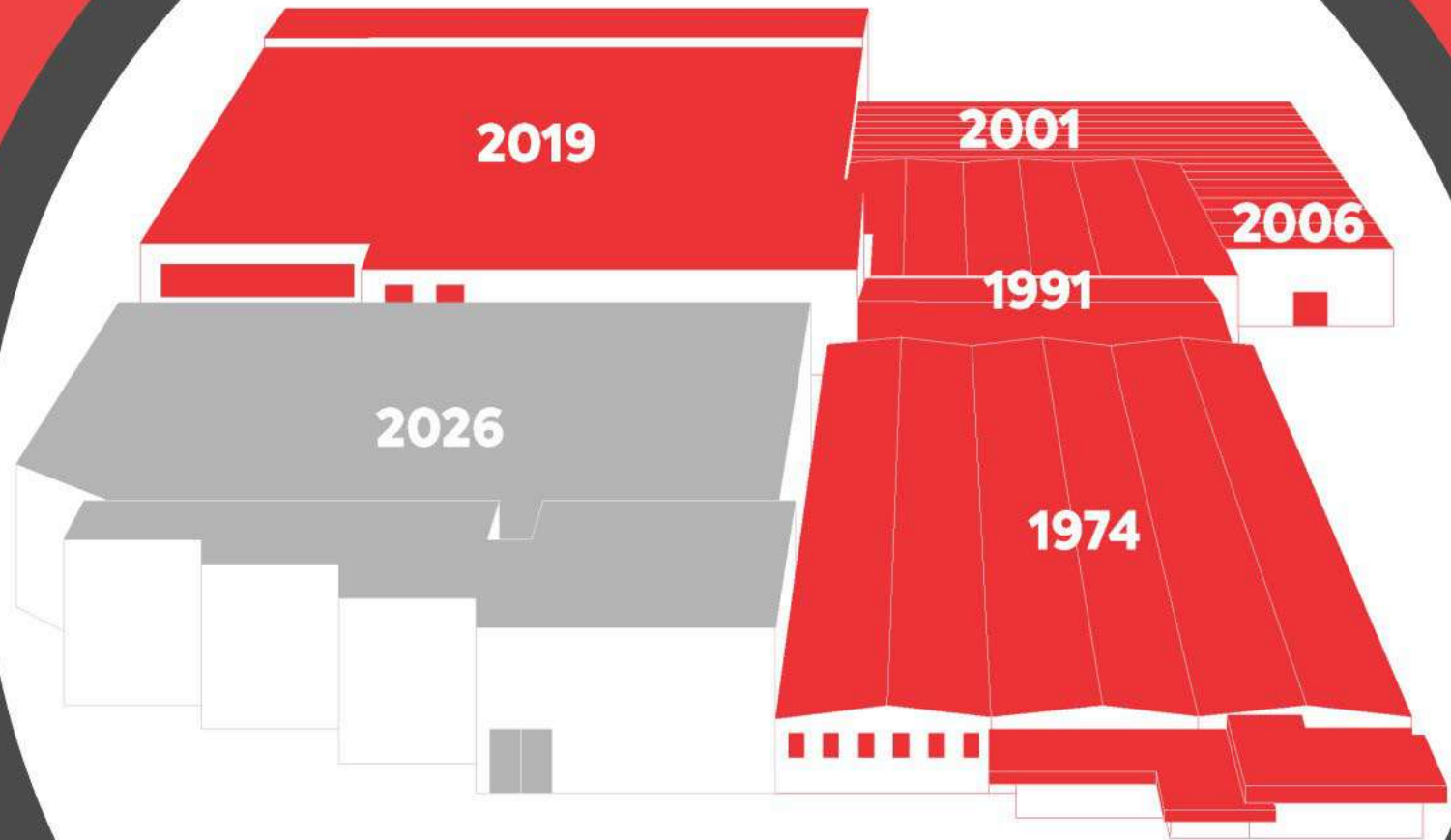




Our plant expansions in
Mazzano (Brescia, Italy):

from initial **5.000 m²**
to **20.000 m²**

+ 5.000 m² in the USA



BONOMI INDUSTRIES, supported by decades of history and experience, international growth, financial strength, competence and employees' professionalism, renews its commitment as follows:



THE CUSTOMER

We all, as a company, set our primary goal at exceeding customer's expectations.



THE INDIVIDUALS

We guarantee the full respect of international laws and those of the countries where we operate. We value the importance of being a Family Company with long term goals. We care for the environment and protect our Planet resources with quality products and technological manufacturing processes.



OUR VALUES

Innovation is a state of mind. One can't keep doing the same things and hope to improve. Innovations and improvements bear risks and stress, but strong individuals ponder the former and bear the latter.



INNOVATION

We all, collectively, respect all individuals, support them to reach their goals and work diligently to provide a healthy and safe work environment.



PRODUCTS & SERVICES

VALVES

ACTUATORS

OEM

Your logo is here



RUB VALVES

Valves and components from 1/8" to 4";

Full pass, reduced pass;

Connection variety: DIN 2999, ISO 228, ISO 7/1, BS.21, ANSI

B.1.20.1, AS 1722, JIS threads, weld or press connections;

Different control knobs: lever, butterfly, padlockable, square;

A complete line in CR brass or low lead brass is also available; Customized solutions and special products, responding to specific customer requirements.

- **Silicone-free;**
- **Product traceability;**
- **Lifetime warranty;**
- **100% Made in Italy;**




APPLICATIONS



**WHY CHOOSE
RUB VALVES**



OUR APPLICATIONS



ACTUATION



INDUSTRY



GAS



PNEUMATIC



DRINKING WATER



PLUMBING



FIREFIGHTING





ACTUATION

- Pneumatic Actuators
- Electric Actuators

VISIT
OUR
[WEBSITE](#)

s.6400

1/2" - 4"



- Heavy duty
- EN 10226-1 threads
- 100% Full flow
- FF
- ISO 5211 actuation flange
- manual lockable handle option



s.73 & s.76

1/2" - 2"



- EN 10226-1 threads
- 100% Full flow
- FFF
- ISO 5211 actuation flange
- s.73 is T-port with 4 seats
- s.76 is L-port with 2 seats.

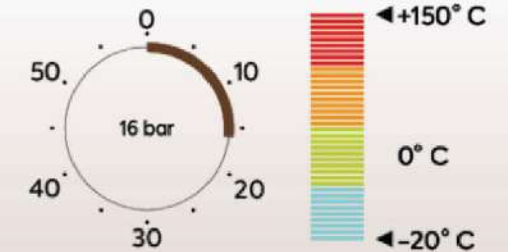
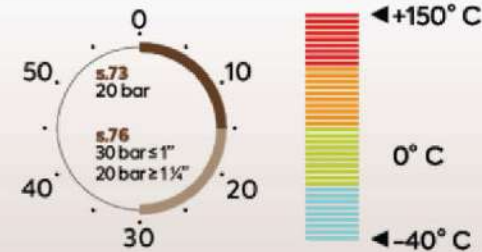
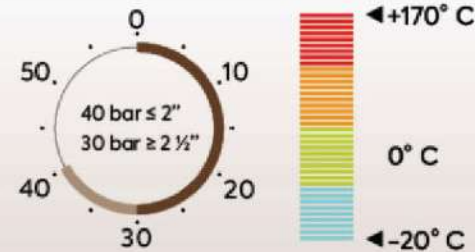


s.65

1/2" - 1 1/4"



- EN 10226-1 threads
- 100% Full flow
- FF
- ISO 5211 actuation flange
- manual lockable handle option



s.31 NPT



s.6400LT



s.6439 NPT



s.6439LT NPT



s.6441 NPT



k.6405



s.7341 NPT



s.7641 NPT



s.7350 BSPT



s.7650 BSPT



s.134 NPT





INDUSTRY

- Industrial filtration
- Water treatment facilities
- Food service industries
- Pneumatic control and power lines
- Chemical plants
- Refinery
- Pharmaceutical Industry

Manufacturers of:

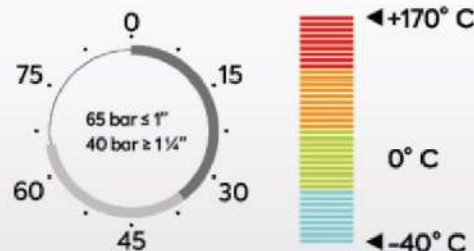
- Commercial boilers
- HVAC heating
- Food industry
- Radiant heating
- Steam to cooking vessels
- Industrial steam
- Power generation

VISIT
OUR
[WEBSITE](#)

s.33 1/4" - 2"



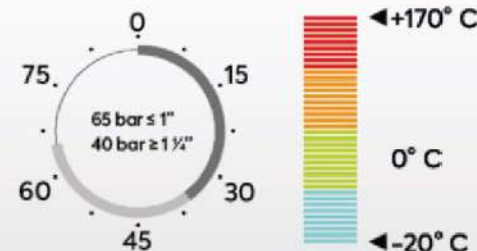
- Heavy duty
- EN 10226-1 threads
- 100% Full flow
- Adjustable packing gland
- FF, MF
- Various handle options



K.60 spring return 1/4" - 2"



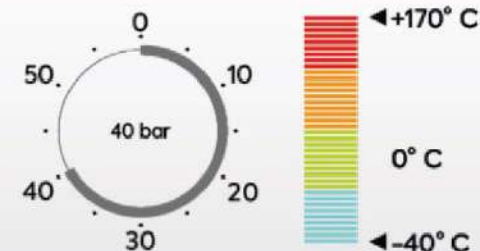
- Heavy duty
- EN 10226-1 threads
- 100% full flow
- DIN 3202 M3 compliant
- Robust spring return for shut-off
- FF
- double FPM O-ring
- lever



s.85 1/4" - 2"



- EN 10226-1 threads
- Full flow
- Adjustable packing gland
- FF
- Various handle options



s.17



s.7300L



s.7341L



s.7350L



s.7600L



s.7641L



s.7650L



s.84
spring return



s.92
barrel drain



s.92 NPT
SS TRIM



s.92S NPT
solid ball



s.95 NPT
spring return



s.172



SNI7352



s.100



s.101



s.130 NPT



s.131 NPT



s.132 NPT



s.135



s.136





GAS

- Boilers
- Burners
- HVAC heating systems
- Water heaters
- Municipal commercial/residential gas metering
- Refineries
- Refinery gases (methane, ethane, propane, butane)
- Chemical plant feedstocks
- Pharmaceutical gas feedstocks
- Any service gas in manufacturing that is non-corrosive

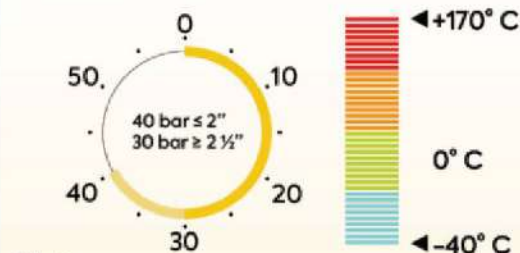
VISIT
OUR
[WEBSITE](#)

s.84 EN331

1/4" - 4"



- EN 10226-1 threads
- Full flow
- FF, MF
- Double FPM O-ring
- Various handle options



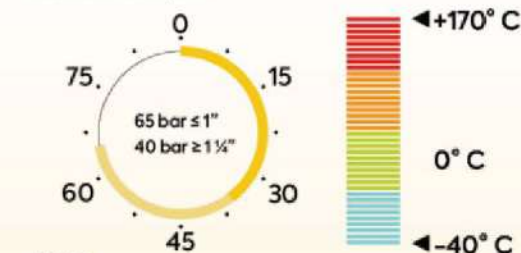
HTB

K.60

1/4" - 2"



- Heavy duty
- EN 10226-1 threads
- 100% full flow
- DIN 3202 M3 compliant
- FF
- double FPM O-ring
- Various handle options



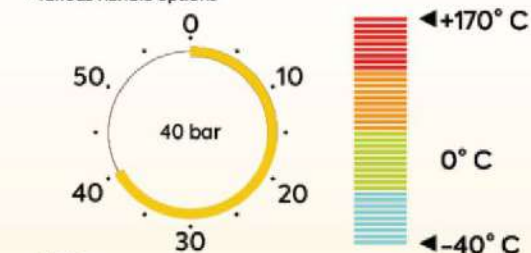
HTB

K.84

1/4" - 2"



- DIN 3202 M3 compliant
- EN 10226-1 threads
- 100% full flow
- Double FPM O-ring
- FF
- various handle options



HTB



s.80 NPT



s.80 NPT surepass



s.8043 NPT dielectric



s.8042 NPT



s.82 NPT



s.84 BSPT



s.92 NPT



s.92 NPT M/F



s.95 NPT



s.95 NPT nickel plated



s.195 flare solder ends



s.195 NPT



s.128A





PNEUMATIC

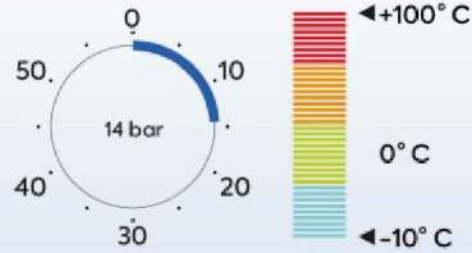
- Compressor lines
- Air to boilers
- Air to burners
- Pneumatic control and power lines
- Air in manufacturing/chemical plants

VISIT
OUR
[WEBSITE](#)

s.93 downstream exhaust 1/4" - 2"



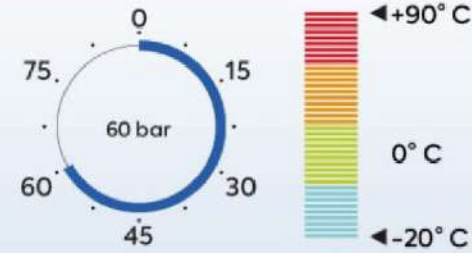
- Downstream exhaust valve
- EN 10226-1 threads
- full flow
- FF
- double FPM O-ring
- patented lockable handle



s.39 forged micro 1/8" - 1/4"



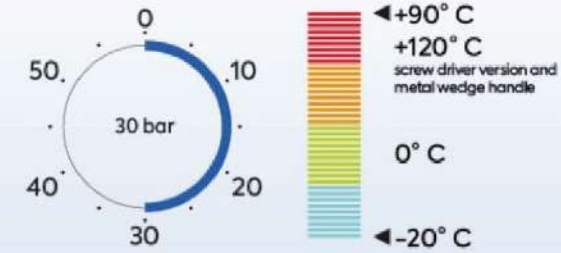
- Mini
- ISO 228 or NPT threads
- reduced flow
- FF / MF
- nylon lever



s.35 high pressure 1/8" - 1/2"



- Mini high pressure
- ISO 228 or NPT threads
- reduced flow
- FF / MF
- wedge nylon or metal handle



s.34
PG RoHS ENEC



s.34 NPT
PG RoHS



s.35 high pressure BSPT
PG RoHS



s.35 high pressure NPT
PG RoHS



s.39 BSPT forged micro
RoHS



s.39 NPT forged micro
RoHS



s.93 BSPT
downstream exhaust
RoHS OSHA



s.93 NPT
downstream exhaust
PG RoHS OSHA





DRINKING WATER

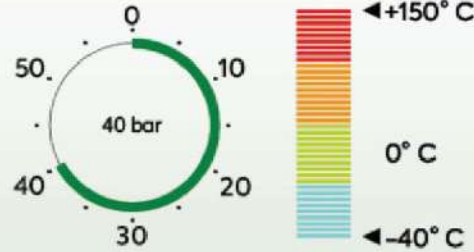
- Drinking fountains
- Bottled water
- Water treatment facilities
- Residential water delivery
- Food service industries
- Plumbing
- Coffee machines

VISIT
[OUR](#)
[WEBSITE](#)

s.84W 1/4" - 2"



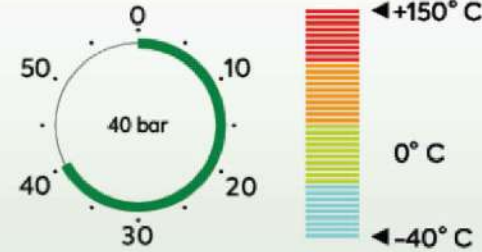
- EN 10226-1 threads
- Full flow
- FF, MF
- Double EPDM O-ring
- Various handle options



s.84W M/F 3/4" for flat gasket



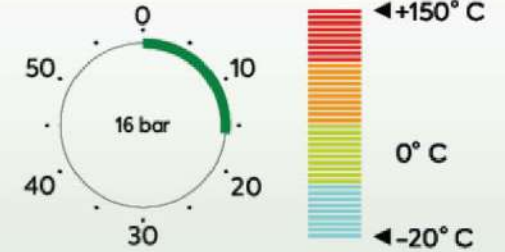
- EN10226-1 threads
- Full flow
- FF, MF
- Double EPDM O-ring
- Various handle options



s.65 1/2" - 1 1/4"



- EN 10226-1 threads
- 100% Full flow
- FF
- ISO 5211 actuation flange
- manual lockable handle option



s.20 DZR



s.20 DZR M/F



s.21 DZR



s.24 DZR



s.24 DZR press ends



s.26 DZR



s.28 DZR



s.30 DZR



s.468LF DZR



Puri T-242



Puri T-292



Puri T-264





PLUMBING

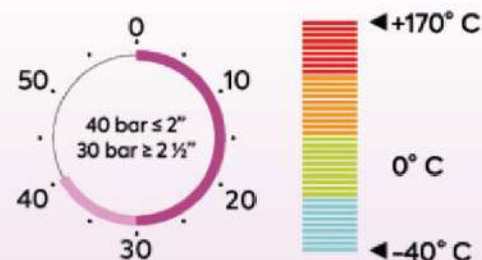
- Low power boilers
- Water wells
- Watering
- Sprinkler/fire control
- Hotel maintenance
- Hydronics/radiant heat

VISIT
[OUR](#)
[WEBSITE](#)

s.90
1/4" - 4"



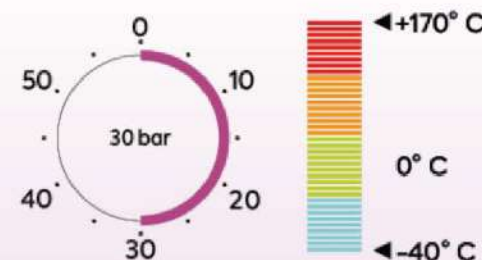
- ISO 228 threads
- Full flow
- FF, MF, MM
- Double FPM O-ring
- Various handle options



s.51
1/2" - 2"



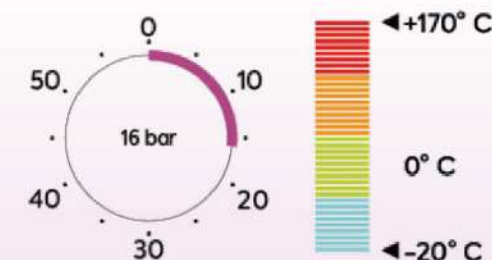
- EN10226-1 threads
- Nominal flow
- FF, MF
- Double FPM O-ring
- Various handle options



s.81
1/2" - 2"



- Side drains
- ISO 228 threads
- Nominal flow
- FF, MF
- Double FPM O-ring
- Various handle options



s.42
UL US PG RoHS



s.50
EAC PG RoHS



s.55 KFE
EAC PG RoHS



s.63
EAC PG RoHS



s.71 NPT
SR US PG RoHS



s.88 BSPT
PG RoHS



s.90 NPT short
PG RoHS



s.9036
EAC PG RoHS



s.94
EAC PG RoHS



s.110
PG



s.111
PG



s.112 NPT



s.114 NPT
PG



s.120
PG RoHS



s.123
PG ACS



s.123 NPT
PG ACS



s.124
PG



s.126



s.126M



s.126M NPT
PG



s.128



s.140 bib-cock
EAC PG



s.142 bib-cock
PG



s.190
PG WRAS



s.190M
WRAS





FIREFIGHTING

- Drain valves for Sprinkler system
- Quick opening motorized valves for tunnel fire-fighting automatic system
- Pneumatic operated valves for fire-fighting trucks and pumps
- Valves for Fire-fighting reels with special short lever
- Lever-operated Valves with locking device or limit switches

VISIT
[OUR](#)
[WEBSITE](#)

s.84 FM1140

1/4" - 2"



- EN 10226-1 threads
- Full flow
- FF, MF
- Double FPM O-ring
- Various handle options



s.92 NPT

1/2" - 2"



- NPT threads
- Full flow
- FF, MF
- Adjustable packing gland
- Various handle options

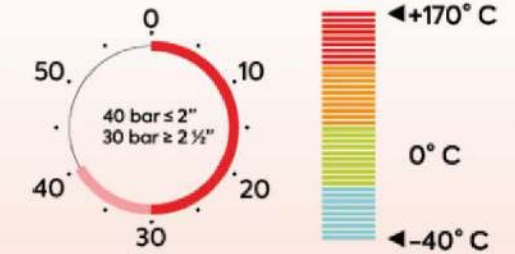
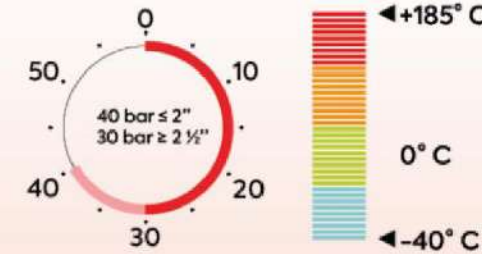
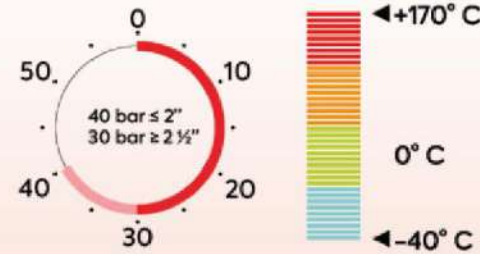


s.90

1/4" - 4"



- ISO 228 threads
- Full flow
- FF, MF, MM
- Double FPM O-ring
- Various handle options



s.92 NPT M/F



s.92S NPT solid ball



s.95 NPT



s.95 NPT nickel plated



s.95 NPT spring return



s.84 BSPT



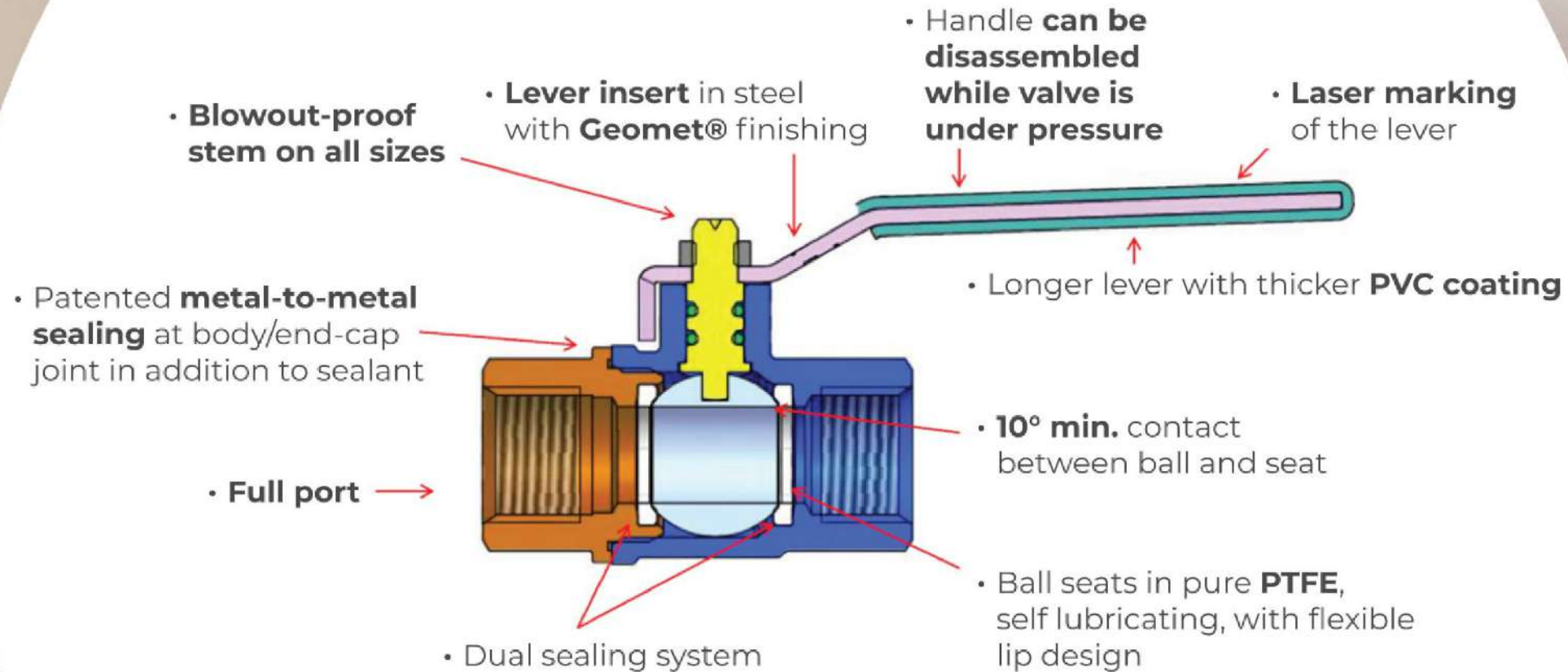
s.64 + EA



s.64 + CT



WHY CHOOSE **RuB** VALVES



• **SILICONE-FREE!**

• **LIFETIME WARRANTY!**



ACTUATORS

Electric Actuators



CH



CT



CP

Pneumatic Actuators



EA



CH Actuators

Compact High Torque
50 – 400 Nm
443 lb – in



- Direct Mounting ISO 5211
- Voltage range: 24 vac/vdc - 110/230 vac
- Dome position indicator
- Limit switches
- Manual override
- IP67 (fully weatherproof)
- 2P or 3P or Modulating controlling
- Options: Fail mode (Supercapacitors)



CP Actuators

Compact Power
8Nm
71 lb-in

- Compact and light package to fit in restricted spaces.
- Easy-to-assembly with valves with 5211 top flanges by means of an adaptor
- Voltage range:
 - 220-240V AC 50/60Hz
 - 110-120V AC 50/60Hz;
 - 24V AC 50-60Hz;
 - 24V DC / AC 50-60Hz;
 - 3.5÷12 V DC; 12 V DC; 24V DC;
- Motor power consumption only during operation:
 - DC and DC/AC: 5.5W;
 - AC: 8W
- 2P or 3P controlling
- Over 100.000 cycle life tests made
- IP 65 – Nema 4x
- Suitable even for 1/4" valves (and above)
- Visual position indicator
- Micro limit-switches and feedback signal

EA Actuators



- Aluminium Body/Pistons
- Rack and pinion mechanism: compact design
- ISO 5211 and Namur Interface: easy-to-install and fast-to-install
- Springs kits: versatile and easy to adjust spring torques
- Long lifetime
- Low maintenance cost
- Heavy-duty cycles

CT Actuators

C-TORK
8 – 40 Nm
70 – 354 lb-in



- Compact package with perfect shaft alignment
- Direct Mounting ISO 5211
- Voltage range: (24v – 48v – 110v – 230v - 50/60hz – Vac/Vdc)
- Visual position indicator & manual-override
- IP 54 (CT1) and IP 67 (CT2-3-4)
- Limit Switches and feedback signal
- 2P or 3P or Modulating controlling
- Option: ModBus; fast version (1" or 4"); internal heater (anti-condenser); fail mode (super capacitors).

CUSTOMIZATION

- R&D - Development of 100% customized products
- Product customization (handle marking);
- Closed cycle management of special projects to protect confidentiality;
- Packaging customization (label wording, customer bar code)



Your logo is here





OEM

R&D department to develop special products based on specific requests.

- A value proposition that meets previously unmet needs Exceed customer's expectations
- An offering that yields superior performance Identify configurations that help customers achieve their goals
- Design organizational models to create a win to win situation



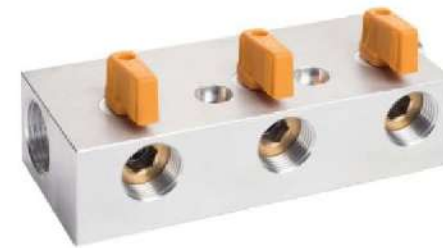
OEMs

Original Equipment Manufacturers (OEM) find in **BONOMI INDUSTRIES**:

- Professional expertise, loyalty and ethic
- Quality and reliability
- Specialization
- Financially sound partner
- Large volume capacity
- Flexibility
- Long term commitment

Customers

- Boilers manufacturers
- Burners manufacturers
- LPG Gas tank and systems manufacturers
- Radiators and heat exchangers manufacturers
- Manufacturers of watering systems
- Manufacturers of fire protection systems
- Manufacturers of refrigeration systems
- HVAC manufacturers
- Shipbuilds
- Filtration industry
- Compressors manufacturers
- Tank manufacturers
- Machine tool manufacturers



Sustainability

96% MANUFACTURING SCRAP IS REUSED;

**100% OF BRASS BALL VALVES ARE SILICONE-FREE
FOR HIGHEST RECYCLABILITY;**

30% OF ENERGY COMES FROM OUR SOLAR PANELS



**Compensation
of CO₂ emission**



[Click here to download our
Sustainability report 2023](#)



BONOMI INDUSTRIES FOREST



One of the actions that the company is taking to offset the CO2 emission is trees planting. In partnership with Treedom, an Italian company that promotes planting projects all over the world, our company will plant 1,000 trees (fruit and stem trees), in the next 5 years.

This project is called **BONOMI INDUSTRIES FOREST**. In 2022 the first 200 trees, which were donated to all employees, were planted in Kenya, thus contributing to the absorption of 57.50 t of CO2 in 10 years as well as to the economic and social development of the local community.



1.000
alberi



To visit the project:
<https://www.treedom.net/it/organization/bonomi-industries-srl/event/bonomi-forest>





Current issue date: 14 December 2021
Expiry date: 13 December 2024
Certificate identity number: 10413280

Original approval(s):
ISO 14001 - 14 December 2021

Certificate of Approval

This is to certify that the Management System of:

BONOMI Industries Srl

Via Padana Superiore 29, Fraz. Ciliverghe, 25060 Mazzano - BS, Italy

has been approved by LRQA to the following standards:

ISO 14001:2015

Approval number(s): ISO 14001 – 00033754

This certificate is valid only in association with the certificate schedule bearing the same number on which the locations applicable to this approval are listed.

The scope of this approval is applicable to:

Engineering, manufacturing and distribution of industrial low pressure shut-off and regulating brass valve in size 1/8" to 4", actuators, related components and accessories in brass or aluminum and custom made products. Providing services in the following areas: administration, finance and control, human resources, marketing, quality system and information technology.

Paul Graaf

Area Operations Manager, Europe

Issued by: Lloyd's Register Quality Assurance Italy Srl

for and on behalf of: LRQA Limited



LRQA Group Limited, its affiliates and subsidiaries and their respective officers, employees or agents are, individually and collectively, referred to in this clause as 'LRQA'. LRQA assumes no responsibility and shall not be liable to any person for any loss, damage or expense caused by reliance on the information or advice in this document or howsoever provided, unless that person has signed a contract with the relevant LRQA entity for the provision of this information or advice and in that case any responsibility or liability is exclusively on the terms and conditions set out in that contract.
Issued by: Lloyd's Register Quality Assurance Italy Srl, Viale Monza, 285 20126 Milano Italy for and on behalf of: LRQA Limited, 1 Trinity Park, Bickenhill Lane, Birmingham B37 7YU, United Kingdom

LRQA

LRQA

LRQA

LRQA

LRQA

LRQA

LRQA

LRQA

LRQA

LRQA

LRQA

LRQA

LRQA

LRQA

LRQA

LRQA

LRQA

LRQA

LRQA

LRQA

LRQA





BONOMI INDUSTRIES SRL

è stata assegnata a

Medaglia d'argento

come riconoscimento del rating EcoVadis

- NOVEMBRE 2023 -



In 2023, to start formalizing internal sustainability actions, **Bonomi Industries** was evaluated by EcoVadis in 4 categories: environment, labor practices and human rights, ethics and sustainable purchases.

EcoVadis is an international company, born in 2007, which is today the most reliable evaluation provider on corporate sustainability with a network of more than 100,000 companies analyzed in more than 175 countries.

With the current performance evaluation, **Bonomi Industries** got the silver medal, with **percentage ranking 80th**.

This initiative demonstrates how our company is making a serious and ongoing commitment to sustainability.

Among the many strengths that have been recognized to us are:

- **Recycling**
- **Training of employees** on safety matters, supply of PPE, health checks, internal audits on **Health & Safety**
- Periodic checks on atmospheric pollutants



SALES & FINANCIALS

A significant production expansion project is underway and our turnover is constantly growing year after year, as foreseen in our ambitious business plan.



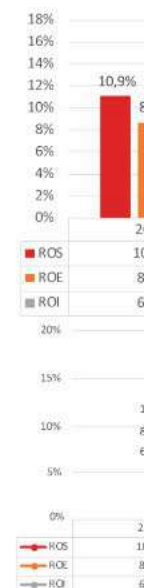
	2019	2020	2021	2022	2023
REVENUE	45.401.478 €	40.362.121 €	51.601.487 €	61.560.403 €	56.126.132 €
EBITDA	7.088.353 €	3.893.486 €	10.015.086 €	16.277.623 €	9.815.944 €
EBITDA %	16%	10%	19%	26%	17%
NET INCOME	3.983.632 €	1.616.160 €	2.681.601 €	8.913.858 €	3.424.637 €
PFN	607.780 €	9.693.958 €	5.839.982 €	10.404.858 €	9.882.160 €
NET ASSETS	43.773.004 €	49.852.050 €	53.272.966 €	62.673.873 €	65.212.288 €

REVENUE and EBITDA



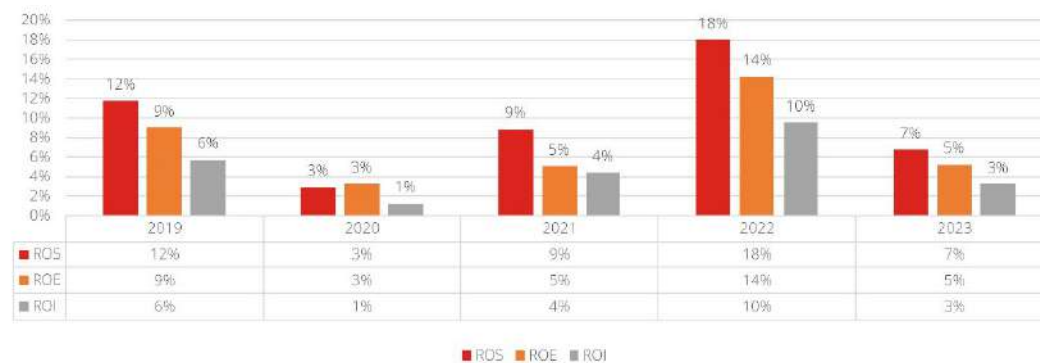
Consolidated data

ROS	
ROE	
ROI	



	2019	2020	2021	2022	2023
ROS	12%	3%	9%	18%	7%
ROE	9%	3%	5%	14%	5%
ROI	6%	1%	4%	10%	3%

ROS, ROE and ROI

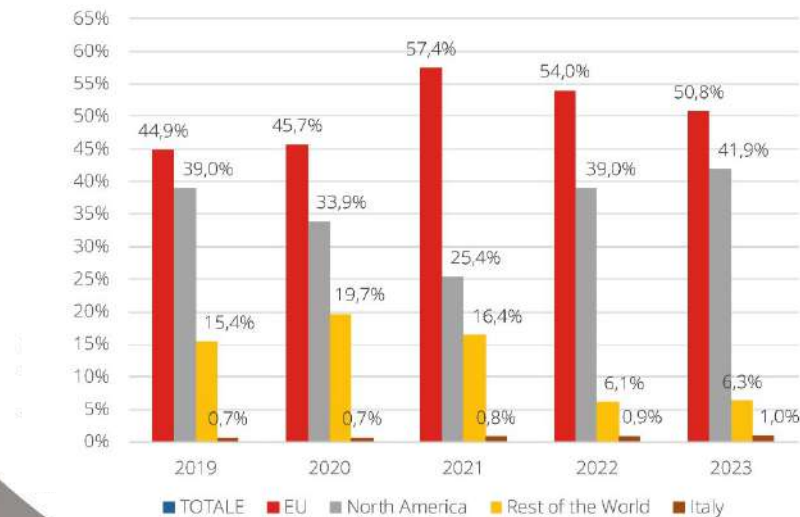


Consolidated data



	2019		2020		2021		2022		2023	
	Sales	%	Sales	%	Sales	%	Sales	%	Sales	%
ITALY	317.810 €	0,7%	266.467 €	0,7%	453.286 €	0,8%	583.835 €	0,9%	568.555 €	1,0%
EU	20.385.264 €	44,9%	18.444.749 €	45,7%	29.596.099 €	57,4%	33.231.677 €	54,0%	28.525.052 €	50,8%
NORTH AMERICA	17.706.576 €	39,0%	13.682.211 €	33,9%	13.113.666 €	25,4%	23.981.446 €	39,0%	23.516.164 €	41,9%
REST OF THE WORLD	6.991.282 €	15,4%	7.968.694 €	19,7%	8.438.435 €	16,4%	3.763.445 €	6,1%	3.516.361 €	6,3%
TOTAL	45.401.478 €	100%	40.362.121 €	100%	51.601.487 €	100%	61.560.403 €	100%	56.126.132 €	100%

SALES by MACRO GEOGRAPHICAL AREA



Consolidated data

	Sales
CORE PRODUCTS	31.890
OEMS	10.37
TOTAL	42.26

OEM



20



2022	
Sales	%
1.835 €	0,9%
1.677 €	54,0%
1.446 €	39,0%
1.445 €	6,1%
0.403 €	

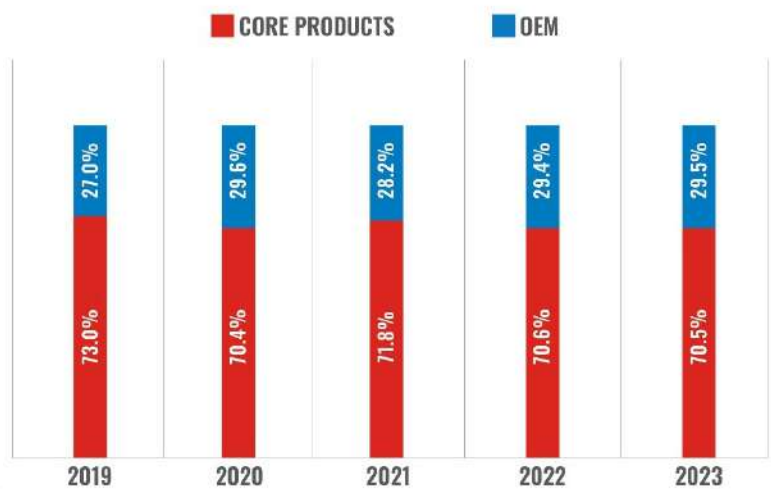
AL AREA

venue by Area

of the World
ch America
/

	2019		2020		2021		2022		2023	
	Sales	%	Sales	%	Sales	%	Sales	%	Sales	%
CORE PRODUCTS	33.129.082 €	73.0%	28.397.869 €	70.4%	37.041.100 €	71.8%	43.464.264 €	70.6%	39.574.996 €	70.5%
OEMS	12.272.397 €	27.0%	11.964.252 €	29.6%	14.560.386 €	28.2%	18.096.139 €	29.4%	16.061.323 €	29.5%
TOTAL	45.401.478 €	100%	40.362.121 €	100%	51.601.487 €	100%	61.560.403 €	100%	56.126.132 €	100%

OEM and STANDARD SALES

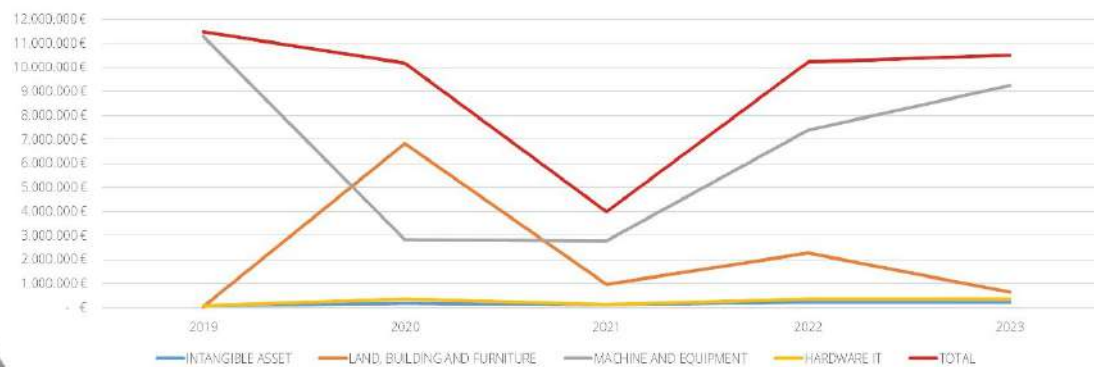


Consolidated data



	2019	2020	2021	2022	2023
INTANGIBLE ASSET	88.329 €	168.562 €	116.380 €	231.652 €	238.458 €
LAND, BUILDING AND FURNITURE	16.916 €	6.828.812 €	962.628 €	2.257.976 €	659.211 €
MACHINE AND EQUIPMENT	11.280.501 €	2.822.238 €	2.768.510 €	7.380.634 €	9.224.254 €
HARDWARE IT	94.577 €	341.197 €	133.817 €	359.327 €	359.822 €
TOTAL	11.480.324 €	10.160.809 €	3.981.335 €	10.229.589 €	10.481.745 €

INVESTMENTS AREA



Consolidated data



QUALITY CONTROL

We are very proud of our 100% made in Italy shut-off brass valves, actuation and OEM engineered product manufactured in our **ISO 9001:2015, ISO 45001:2018 and ISO 14001:2018** certified Corporate Headquarters in Brescia, Italy.

We implemented this rigorous quality management and assurance system since 1995 monitored by Lloyd's Register, helping us improve quality and reliability.

Besides Lloyd's and PED compliance, we offer a verified package of quality assurance based on testing services, state of art technology and approvals released by main laboratories and quality agencies from all over the world.



OUR
CERTIFICATIONS

OUR
VOLUMES

OUR TESTS

OUR
PRODUCTION

OUR
CAPABILITIES










APPROVALS

OUR CERTIFICATIONS

	Deutsche Vereinigung des Gas und Wasserfaches e.V. Technisch-wissenschaftlicher Verein			Система сертификации ГОСТ Р Госстандарт России	
	Deutsche Vereinigung des Gas und Wasserfaches			The Australian Gas Association	
	Deutsche Vereinigung des Gas und Wasserfaches Hygiene			OSHA Compliant	
	Schweizerischer Verein des Gas und Wasserfaches			Factory Mutual Research Corporation	
	Attestation de Conformité Sanitaire			Underwriter Laboratories Inc.	
	ARGB-KVBG			CRN-TSSA	
	Water Regulations Advisory Scheme			CSA International for Drinking Water to NSF/ANSI 61- NSF/ANSI 372	
	British Standards Institution			CSA - Canadian Standards Association	
	Kiwa KUKreg4			KSFD -Kuwait Fire Service Directorate	
	Ruse. / Boverket			LIA - LP Gas Instruments Inspections Association	
	Kiwa - Swedcert			General Directorate of Civil Defence	

COMPLIANCES

	RoHS	
	Reach declaration	Reach
	PED 2014/68/UE by ICIM (0425)	PED
	Декларация соответствия	EAC





OUR VOLUMES

over 3.000 finished products

over 60 Mln components produced per year

8 Mln brass valves produced per year

over 7.000 components

270.000 parts produced per year

7.300 pallets stored



OUR TESTS



Automatic testing throughout the whole process

2

Seal tests on each valve*

24

Hours seal test on each valve*



Statistical in-line inspections of all components

400.000

Tests performed every day in production

25.000

Cycles zero-leakage life-test, along with four times burst-test, are part of our validation program

*applies to most products



OUR PRODUCTION

Transfer Machines,
specifically designed for
forgings from 1/8" to 4" size

CNC lathes and drilling machines

Multi-spindle bar cutting machines

Transfer machines for bars

Custom-made valve balls cutting
and polishing machines

Flexible assembly and testing lines

Automatic assembly machines
1/8" through 4"

Automatic and self-calibrating
in-line testing equipment

In-house tool production

Packaging Line

Wireless integrated system for
management of goods storage,
batch traceability, realtime
up-to-date information
on parts inventory



Our external processes:

Brass bars production

Forging

Surface treatments

Seals and O-rings

Levers and other operating devices

OUR CAPABILITIES



6-spindle and 8-spindle lathe machines with automatic loaders



Transfer machines for forgings with automatic loaders



Multi-spindle bar cutting machines



Transfer machines for bars



Automatic valve assembly and testing equipment 1/8" thru 4"



Automatic handle assembly and testing equipment



Packaging line



Flexible assembly and testing line



Robotized balls machining with diamond ultra finish



Miscellaneous equipment to produce internal tools and prototypes



All equipment is subject to maintenance program



Production
Inline, s



Logistics
Use of bar co
stages of pro
quantity veri



Alloys
Traditional
leadfree b
dezincifica



Substrates
Steel
forg
all s



OUR CAPABILITIES



Production

Inline, self-calibrating tests

FMEA

Available upon request PPAP



Logistic

Use of bar code through-out all stages of production and multiple quantity verifications

Dimensions

5,5 mm thru 100 mm



Alloys

Traditional brass, low lead brass, leadfree brass, aluminum, dezincification-resistant brass

Seal test

Air test, by automated equipment
100% automated air-leak test



Subcontract

Steel plates, plating, forging, plastics, elastomers, all sourced locally

Assembly

100% in-line inspection of all components



An aerial photograph of an industrial complex. In the foreground, a large building with a dark, corrugated metal roof is visible. To its right, a large, modern industrial building with a light-colored facade and a series of white, curved roof sections stands out. The background shows a residential area with houses and trees. A large red circle is superimposed over the center of the image, containing white text.

THANK YOU

FOR YOUR ATTENTION

BONOMI INDUSTRIES

Via Padana Superiore, 29 - 25080 Mazzano (BS)

T +39 030 212441

info@rubvalves.com

www.bonomiindustries.com