



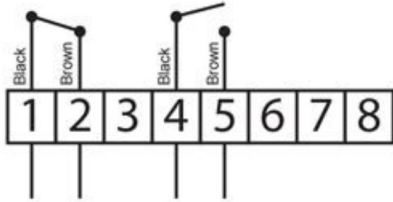
Limit Switch box



Features and specifications:

- Enclosure: waterproof IP67, O-ring sealed
- Material: aluminum, polyester coated
- Ambient temperature: -20°C ~ +80°C
- Switch cams: adjustable, preset for 90°
- Cable entries: 2xM20x1.5
- Terminal block: 8 pos of terminal strips (6 for switches, 2 for solenoid valve power)
- Position indicator: dome type 0°C ~ 90°C
- Mounting bracket: stainless steel acc. to VDI/VDE3845, NAMUR
- Mechanical switches: 2 pcs. max 250V AC 16A, 125 V DC 0.6A

WIRING

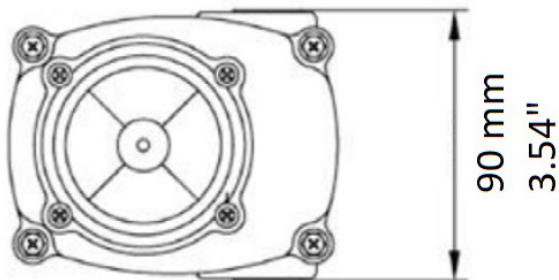


- 1 - IND. COMMON
- 2 - IND. CLOSED VALVE
- 3 - FREE
- 4 - IND. COMMON
- 5 - IND. OPEN VALVE
- 6 - FREE
- 7 - FREE
- 8 - FREE



Dimensions :

Dimensions are in mm/inch



110 mm
4.33"

