



# s.134 NPT stainless steel

1/2" - 2"  
ISO 5211



## Quality

- Dual sealing system allows valve to be operated in either direction making installation easier
- Silicone-free lubricant on all seals
- NACE compliance MR-01-75

## Body

- Designed and tested for ANSI B16.34
- CF8M stainless steel housing

## Stem

- Blowout-proof stem

## Sealing

- Reinforced PTFE seats

## Threads

- NPT taper ANSI B.1.20.1 female by female threads

## Flow

- 100% full port for maximum flow



## Handle

- AISI 316 stainless trim
- Convertible for manual or actuated operation
- ISO 5211 actuator mounting pad allows direct mounting of **RuB** electric and pneumatic actuators, with no bracket or coupling required.

## Working pressure & temperature

- 1000 PSI cold working pressure
- 150 PSI WSP steam rating
- $2 \times 10^{-2}$  torr vacuum rating
- \*150 psig non-shock working steam pressure. Not suitable for throttling steam.
- -50°F to +450°F (-45°C to +232 °C)
- **WARNING:** freezing of the fluid in the installation may severely damage the valve

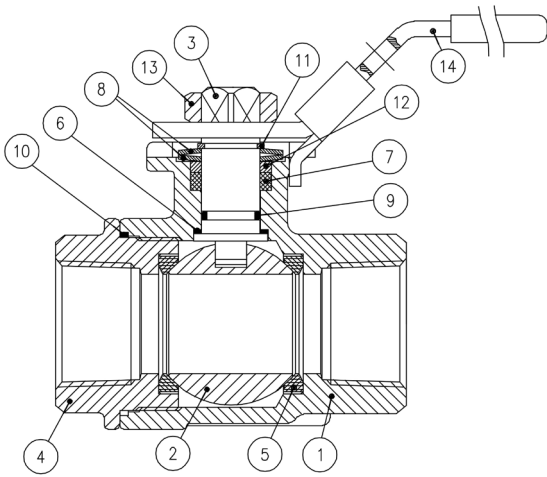
## Options

- Stainless steel lockable handle

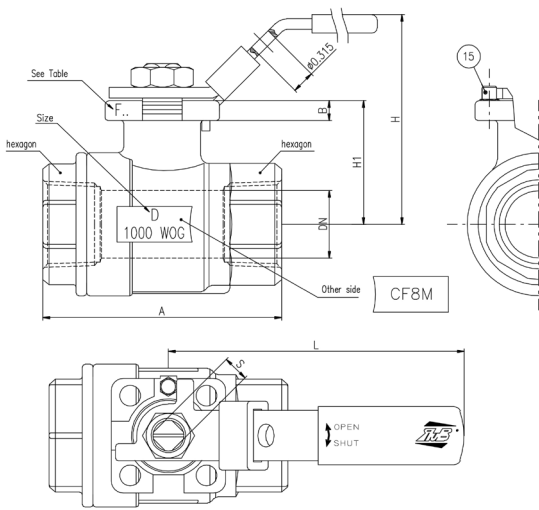
## Approved by or in compliance with

- GOST-R (Russia)

**NOTE:** approvals apply to specific configurations/sizes only.



Part description	Q.ty	Material	
1	Body	1	A351-CF8M
2	Ball	1	A351-CF8M
3	Stem	1	1.4401/AISI 316
4	Cap	1	A351-CF8M
5	Seat	2	RTFE
6	Seat	1	RTFE
7	Packing		TFE
8	Bellville	2	SK5
9	O-Ring	1	FPM
10	Gasket	1	RTFE
11	Snapping	1	1.4301/AISI 304
12	Follower	1	1.4401/AISI316
13	Nut	1	1.4301/AISI 304
14	Lockable handle	1	A240 SS304
15	Stop pin	1	1.4301/AISI 304



Code	134D41	134E41	134F41	134G41	134H41	134I41
D (Size)	1/2"	3/4"	1"	1 1/4"	1 1/2"	2"
DN (inch)	0.56	0.81	1	1.25	1.5	1.97
H1 (inch)	1.40	1.56	1.84	2	2.3	2.8
A (inch)	2.60	2.99	3.54	3.94	4.41	5
B (inch)	0.185	0.185	0.185	0.197	0.197	0.276
S (inch)	0.35	0.35	0.43	0.43	0.43	0.55
F.. (ISO 5211)	F03	F03	F04/F05	F04/F05	F04/F05	F07
Cv (GPM)	20.0	42.0	65.0	101.0	145.0	250.0

Code	134D41L*	134E41L*	134F41L*	134G41L*	134H41L*	134I41L*
L (inch)	4.40	4.40	5.87	5.87	5.87	7.5
H (inch)	2.50	2.66	3.14	3.3	3.6	4.5

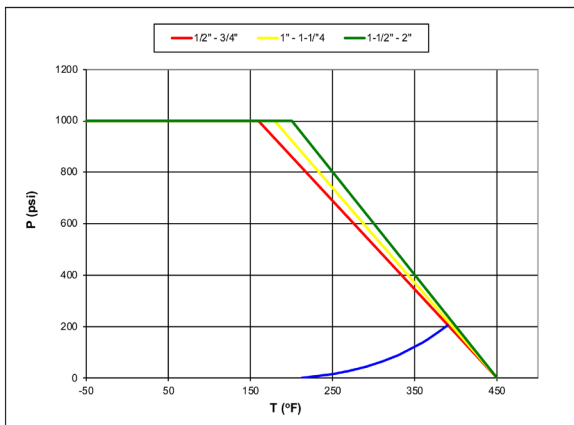
### Torque for actuator sizing in-lb

Delta P →	0=200 PSI	
	To open	To close
1/2"	49	41
3/4"	78	59
1"	123	66
1.1/4"	156	109
1.1/2"	250	144
2"	317	211

### Water flow ratings

Size	1/2"	3/4"	1"	1.1/4"	1.1/2"	2"
CV	20	42	65	101	145	250

### Pressure-temperature chart



### Pressure drop chart

