



# s.31 Mini Valve

1/4" - 3/4" EN 10226-1

This newly engineered valve features all the good characteristics of the s.31 **RuB** mini valve, in particular:



## Quality:

- 100% seal test guaranteed in according to EN12266-1 RATE A in either direction
- Compatible with most industrial fluids including those too viscous for pilot operated valves
- Dual sealing system allows valve to be operated in either direction making installation easier
- No metal-to-metal moving parts
- No maintenance ever required
- Silicone-free lubricant
- Chrome plated ball for longer life
- Can operate also in vacuum line

## Body:

- Finest brass according to EN 12165 and EN 12164 specifications
- Strong one piece body construction

## Stem:

- Blowout-proof brass stem
- Maintenance-free, double FPM O-rings at the stem for maximum safety

## Sealing:

- Pure PTFE self-lubricating seats

## Threads:

- EN 10226-1, ISO 228 parallel female by female threads

## Working pressure and temperature:

- Shell rating: 40 bar non-shock cold working pressure
- Seat rating: Delta P max permissible 16 bar
- -20°C to +120°C (-4°F to +250°F)
- **WARNING:** freezing of the fluid in the installation may severely damage the valve

## Options:

- ISO 7/1, BS 21 BSPT taper threads
- NPT taper ANSI B.1.20.1 threads

## PED directive:

- The product meets the requirements of PED Directive 2014/68/UE and according to art.4 par.3, it does not require CE marking

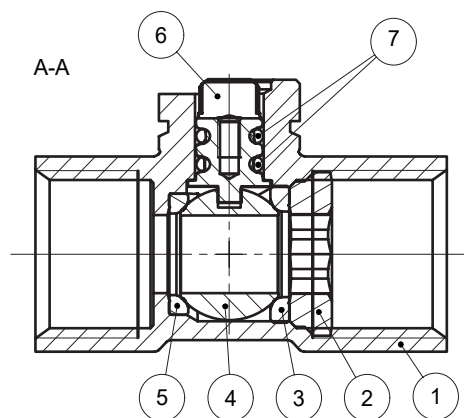
## Approved by or in compliance with:

- RoHS Compliant (EU)
- EAC – Declaration of conformity (Russia, Kazakhstan, Belarus)

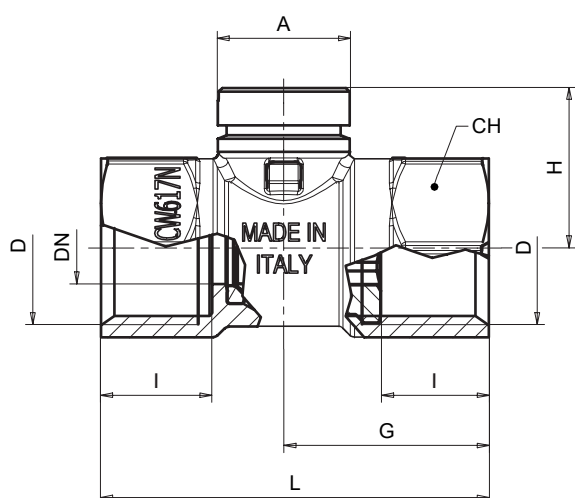
**NOTE:** approvals apply to specific configurations/sizes only.

Quick Connection with CP actuators





	Part description	Qty	Material
1	Unplated body	1	CW617N
2	Unplated retainer nut	1	CW617N
3	Retainer seat	1	PTFE
4	Chrome plated ball	1	CW617N
5	Body seat	1	PTFE
6	Unplated stem O-Ring design	1	CW617N
7	O-Ring	2	FPM



Code	AV31BF3	AV31CF3	AV31DF3	AV31EF3
D (inch)	1/4"	3/8"	1/2"	3/4"
DN (mm)	8	10	10	12.7
I (mm)	12	12	15.5	17
L (mm)	45.5	45.5	53.5	61.5
G (mm)	23.8	23.8	28	32.5
A (mm)	18.5	18.5	18.5	18.5
H (mm)	22.5	22.5	22.5	25.5
CH (mm)	25	25	25	31
Kv (m3/h)	5.8	9.5	9.5	25.4

### Torque for actuator sizing N.m

Delta P -->	0 ÷ 16 bar
Valve size	N.m
1/4" ÷ 1/2"	1.8
3/4"	2.5

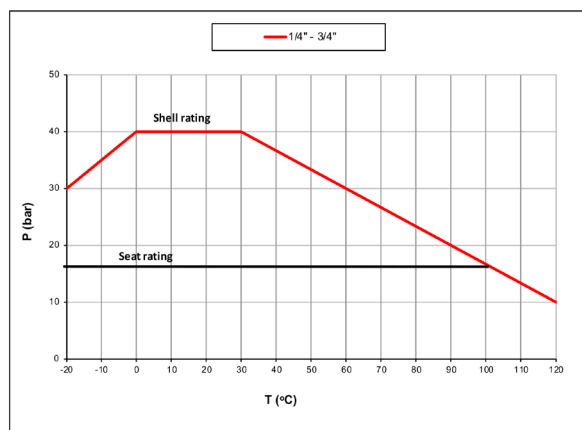
### Torque correction factors

Valve torque can vary according to operating frequency, temperature and friction characteristics of the media.

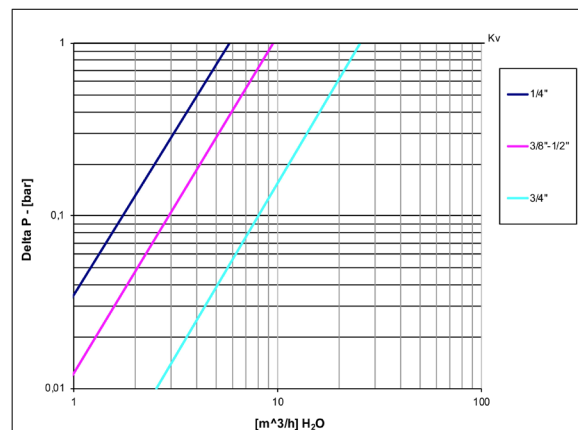
If media has more or less friction than water, multiply torque by the following factors:

Lubricating oils or liquids	0.8
Dry gases, natural gas	1.5
Slurries or liquids bearing abrasive particles	1.5÷2.5

### Pressure-temperature chart



### Pressure drop chart



XCES31 - 0