



s.39 NPT forged, micro

1/8" - 1/4"
high pressure ball valve



Quality

- Dual sealing system allows valve to be operated in either direction making installation easier
- No metal-to-metal moving parts
- No maintenance ever required
- Silicone-free lubricant on all seals
- Chrome plated brass ball for longer life
- Each valve is seal tested for maximum safety
- Handle stops on body to avoid stress at stem
- Handle/stem clearly shows ball position

Body

- Hot forged sand blasted brass body
- Finest brass according to EN 12165 specification

Stem

- Blowout-proof brass stem
- Maintenance-free thanks to FPM O-ring at the stem for maximum safety

Sealing

- Pure PTFE self-lubricating seats with flexible-lip design

Threads

- NPT taper ANSI B.1.20.1 female by female threads

Handle

- Reinforced nylon black wedge handle
- Handle removable with valve in service
- **WARNING:** do not exceed reasonable temperature and/or electrical load

Working pressure & temperature

- 900 PSI (60 bar) non-shock cold working pressure
- -4°F to +200°F (-20°C to +90°C)
- **WARNING:** freezing of the fluid in the installation may severely damage the valve

Options

- Male by female threads
- Nylon wedge handle yellow, red or blue
- ISO 228 parallel threads

Upon request

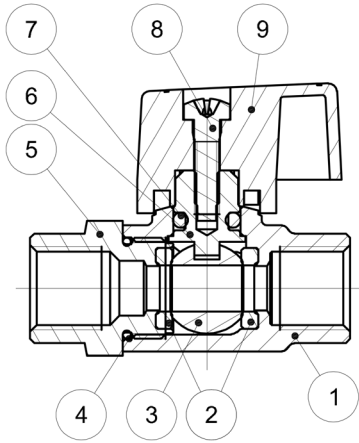
- ISO 7/1 BSPT taper threads
- Other brass alloys or aluminum
- Additional connection options

Approved by or in compliance with

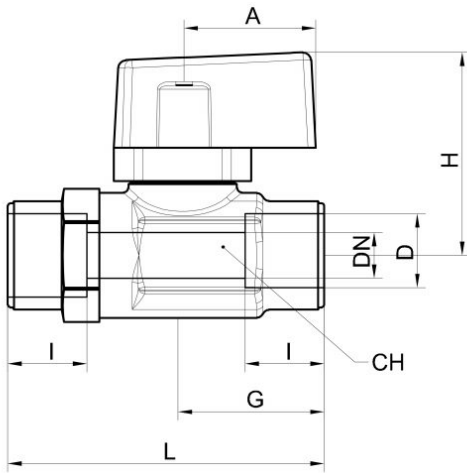
- RoHS Compliant (EU)

NOTE: approvals apply to specific configurations/sizes only.





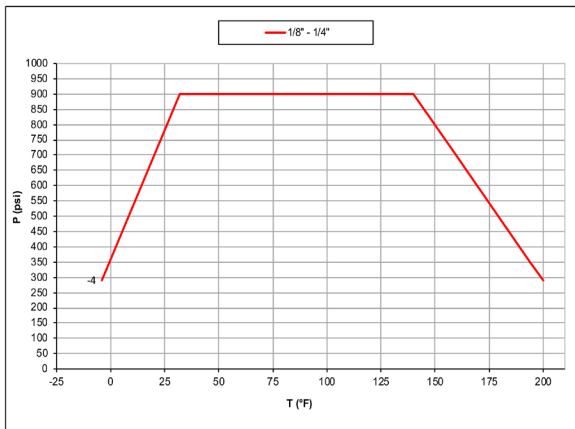
Part description	Q.ty	Material
1 Nickel plated body (external nickel plated, unplated inside)	1	CW617N
2 Ball seat	2	PTFE
3 Chrome plated ball	1	CW617N
4 O-Ring	1	HNBR
5 Nickel plated end cap (external nickel plated, unplated inside)	1	CW617
6 Unplated stem	1	CW617N
7 O-Ring	1	FPM
8 Zinc plated screw	1	C10C (EN10263-2)
9 Black handle	1	Nylon glass filled 30%



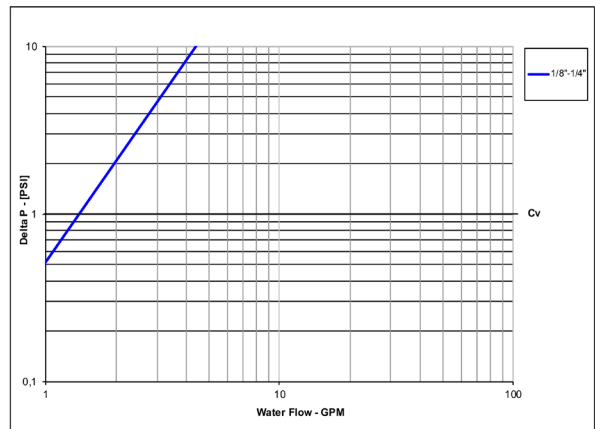
DN shows the nominal flow diameter.

Code	S39AX0M	S39BX0M
D (inch)	1/8"	1/4"
DN (inch)	0.217	0.217
I (inch)	0.374	0.472
L (inch)	1.496	1.732
G (inch)	0.669	0.787
A (inch)	0.630	0.630
H (inch)	0.965	0.965
CH (inch)	0.591	0.591
Cv (GPM)	1.4	1.4

Pressure-temperature chart



Pressure drop chart



XCES39N - 4266