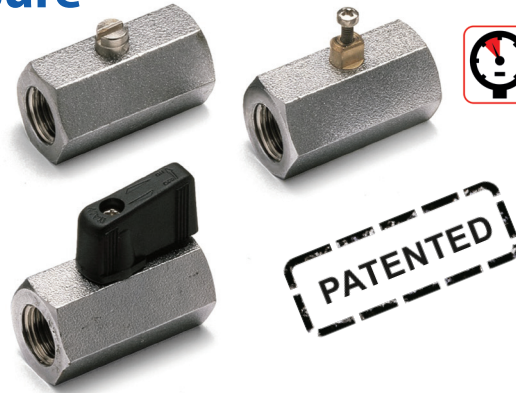




# s.35 BSPT high pressure

1/8" - 1/2"  
mini ball valve



## Quality

- Dual sealing system allows valve to be operated in either direction making installation easier
- No metal-to-metal moving parts
- No maintenance ever required
- Silicone-free lubricant on all seals
- Chrome plated brass ball for longer life
- Each valve is seal tested for maximum safety
- Handle/ stem clearly shows ball position

## Body

- One piece drawn sand blasted brass body with extremely compact design
- Finest brass according to EN 12164 specification
- Patent n. 7011-B/89

## Stem

- Blowout-proof brass stem with FPM O-ring
- Maintenance-free thanks to FPM O-ring at the stem for maximum safety

## Sealing

- Pure PTFE self-lubricating seats with flexible-lip design

## Threads

- ISO7/1, BS 21 taper female by female threads

## Handle

- Reinforced nylon black wedge handle removable with valve in service
- **WARNING:** do not exceed reasonable temperature and/or electrical load

## Working pressure & temperature

- 30 bar (450 PSI) non-shock cold working pressure
- -20°C to +90°C (-4°F to +200°F)
- +120°C (+250°F) screw driver version and metal wedge handle
- **WARNING:** freezing of the fluid in the installation may severely damage the valve

## Options

- Male by female threads
- Screw driver or wrench operated
- Nylon wedge handle yellow, red or green
- Metal wedge handle available in colours red, black, yellow, green, light blue, chrome plated
- Grey wedge handle in Grivory® -high performing polymer
- ISO228 parallel threads
- NPT taper ANSI B.1.20.1 threads

## Upon request

- Aluminum body
- Dezincification resistant brass CW602N

## PED directive

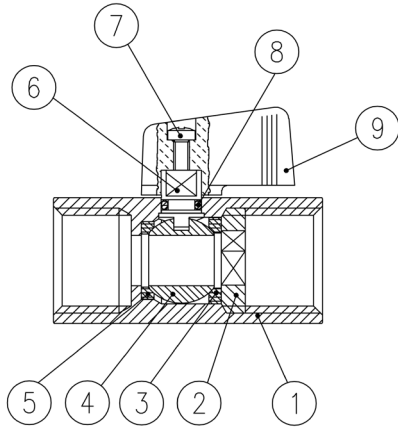
- The product meets the requirements of PED Directive 2014/68/UE and according to art.4 par.3, it does not require CE marking

## Approved by or in compliance with

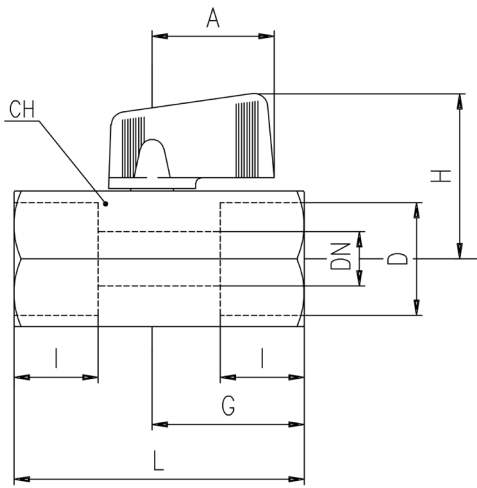
- GOST-R (Russia)
- RoHS Compliant (EU)

**NOTE:** approvals apply to specific configurations/sizes only.





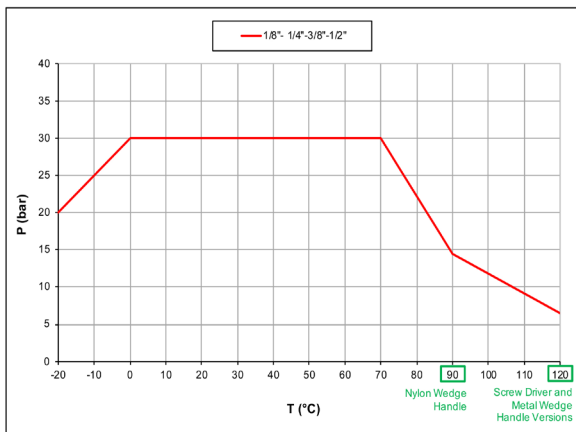
Part description	Q.ty	Material
1 Chrome plated body	1	CW617N
2 Retainer nut	1	CW617N
3 Retainer seat	1	PTFE
4 Chrome plated ball	1	CW617N
5 Body seat	1	PTFE
6 Unplated stem	1	CW617N
7 Zinc plated screw	1	CB4FF (EN10263-2)
8 O-Ring	1	FPM
9 Black handle	1	Nylon glass filled 30%



DN shows the nominal flow diameter.

Code	S35AW0	S35BW0	S35CW0	S35DW0
D (inch)	1/8	1/4	3/8	1/2
DN(mm)	6	8	8	10
I (mm)	11	12	12	15.5
L (mm)	43.5	43.5	43.5	53.5
G (mm)	23	23	23	28
A (mm)	22.5	22.5	22.5	22.5
H (mm)	31	31	31	33
CH(mm)	21	21	21	25
Kv(m3/h)	1.7	4.2	3.6	5

### Pressure-temperature chart



### Pressure drop chart

